



AGENDA
of the
Capital Area Regional Planning Commission

Thursday, April 9, 2026

Zoom Webinar

6:00 pm

Participant Information

How to Attend: This meeting will take place in person and via Zoom Webinar. You may participate in the meeting from your computer, tablet, smartphone, at this URL:

<https://us02web.zoom.us/j/85681285412?pwd=9SeBL9buMbvJa1AaGCpdng2JCXbzzp.1>

Phone: 1-312-626-6799

Meeting ID: 856 8128 5412

Passcode: 464856

If you need other accommodation to attend the meeting, please call Matt Kozlowski at 608-474-6017 or email at MatthewKoz@CapitalAreaRPC.org.

Speaking at RPC Meetings: Oral comments from members of the public may be heard for individual agenda items when called upon by the Chair. The time limit for comments by each attendee will be three (3) minutes unless additional time is granted for all attendees at the discretion of the Chair. The Commission may alter the order of the agenda items at the meeting.

Written Communications: Written communications intended to be provided to the Commission as part of the packet should be received in the RPC office no later than noon, seven (7) days prior to the meeting. Written communications, including emails sent to info@capitalarearpc.org, received after this deadline and up to 24 hours before the meeting will be provided to Commissioners at the meeting.

MISSION: Strengthen the region by engaging communities through planning, collaboration, and assistance.

VISION: A region where communities create exceptional quality of life for all by working together to solve regional challenges.

Agenda

1. Establish Quorum
2. Public Comment on Matters not on the agenda
3. **Consent Agenda (all items are actionable)**
 - a. **Minutes of the March 12, 2026 CARPC Meeting**
 - b. **Executive Committee Recommendations**
 - a. **Job Description Updates – Senior Environmental Engineer, Water Quality Program Director**
 - b. **Organizational Chart Update**
4. **Acknowledgement of Receipt – February 2026 Financial Management Report (actionable item)**
5. **CARPC Resolution 2026-07, Honoring Caryl Terrell for Service to the Commission (actionable item)**

NOTE: If you need an interpreter, translator, materials in alternate formats or other accommodations to access this service, activity, or program, please call the phone number below at least three business days prior to the meeting.

NOTA: Si necesita un intérprete, un traductor, materiales en formatos alternativos u otros arreglos para acceder a este servicio, actividad o programa, comuníquese al número de teléfono que figura a continuación tres días hábiles como mínimo antes de la reunión.

LUS CIM: Yog hais tias koj xav tau ib tug neeg txhais lus, ib tug neeg txhais ntawv, cov ntawv ua lwm hom ntawv los sis lwm cov kev pab kom siv tau cov kev pab, cov kev ua ub no (activity) los sis qhov kev pab cuam, thov hu rau tus xov tooj hauv qab yam tsawg peb hnuv ua hauj lwm ua ntej yuav tuaj sib tham.

6. Proposed Amendment of the *Dane County Water Quality Plan* by Adopting Revised *Environmental Corridor Policies and Criteria* – Staff Presentation and Discussion
7. **CARPC Resolution 2026-08, CARPC Support for the Economic Development of our Region** (*actionable item*)
8. **CARPC Resolution 2026-09, Creating an Ad Hoc Rural Economic Development Committee** (*actionable item*)
9. **CARPC Resolution 2026-10, Accepting the Rural Economic Development Revolving Loan Fund from the Madison Region Economic Partnership** (*actionable item*)
10. Framework with the Madison Metropolitan Sewerage District for CARPC to Support Implementation of Badger Mill Creek Resilience Improvement Projects – Staff Presentation and Discussion
11. Reports
 - a. Commission Chair
 - b. Executive Director
 - (1) Program and Services Updates
 - (2) Partnership Updates
12. Future Agenda Items
(next meeting May 14, 2026, **in person at the Westport Town Hall** and via Zoom, 6:00 pm meeting start)
 - a. Public Hearing - Proposed Amendment of the *Dane County Water Quality Plan* by Adopting Revised *Environmental Corridor Policies and Criteria*
 - b. Review of CARPC approach to public engagement related to sewer service area amendments (May)
 - c. Resolution 2026-XX Approving the 2027 Preliminary CARPC Budget and Dane County Charge (June)
 - d. 2025 Annual Report Presentation (June)
 - e. 2025 CARPC Audit (June)
 - f. Visits/presentations by allied organizations - TBD
13. Adjournment

NOTE: If you need an interpreter, translator, materials in alternate formats or other accommodations to access this service, activity, or program, please call the phone number below at least three business days prior to the meeting.

NOTA: Si necesita un intérprete, un traductor, materiales en formatos alternativos u otros arreglos para acceder a este servicio, actividad o programa, comuníquese al número de teléfono que figura a continuación tres días hábiles como mínimo antes de la reunión.

LUS CIM: Yog hais tias koj xav tau ib tug neeg txhais lus, ib tug neeg txhais ntawv, cov ntawv ua lwm hom ntawv los sis lwm cov kev pab kom siv tau cov kev pab, cov kev ua ub no (activity) los sis qhov kev pab cuam, thov hu rau tus xov tooj hauv qab yam tsawg peb hnub ua hauj lwm ua ntej yuav tuaj sib tham.

DRAFT MINUTES
of the
Capital Area Regional Planning Commission

March 12, 2026

Zoom Webinar

6:00 pm

Commissioners Present: David Pfeiffer, Audra Dalsoren, Maureen Crombie, Cynthia Richson, Regina Vidaver, Heidi Murphy, Noah Lieberman, Bill Tishler, Peter McKeever, Alison Volk, Jim Schuler

Commissioners Absent: Steve Greb

Staff Present: Jason Valerius, Matthew Kozlowski, Prachi Mehendale, Liz Levy, Nick Bower

Others Present: Michael Lawton, Forbes McIntosh

1. Establish Quorum

The meeting was called to order by Chair Pfeiffer at 6:03 pm. A quorum was established.

2. Public Comment on Matters not on the agenda.

None

3. **Consent Agenda (*all items below are actionable items*) (6:04 pm)**

- a. **Minutes of February 12, 2026 CARPC Meeting**
- b. **Executive Committee Recommendations**

(a) **CARPC Resolution 2026-04, Authorizing the Environmental Resources Planner to Execute the DNR Surface Water Grant Agreement**

Motion: Commissioner Crombie moved to approve items on the Consent Agenda. Commissioner Lieberman seconded.

The motion carried unanimously.

4. **Acknowledgement of Receipt – January 2026 Financial Management Report (*actionable item*) (6:05 pm)**

Motion: Commissioner McKeever moved to acknowledge receipt of the January 2026 Financial Management Report. Commissioner Lieberman seconded.

The motion carried unanimously.

5. Update on Economic Development Programming and USDA Revolving Loan Fund Transition – Staff Presentation and Discussion (6:06 pm)

Motion: Commissioner Lieberman moved to table item #5 until after items #6 and #7 in recognition of members of the public that may be present for these agenda items. Commissioner Crombie seconded.

The motion carried unanimously.

Item #5 resumed at 7:29pm.

Jason Valerius provided an update on the options to retain and utilize the USDA-funded Revolving Loan Fund recently administered by the Madison Region Economic Partnership (MadREP). As described in the meeting packet, USDA is offering to release the federal interest in the funds if CARPC agrees to use the

funds for the rural economic development purposes described in 7 CFR 4280.17. The draft resolution, offered for action by the Commission in April, proposes the creation of an ad hoc committee with multi-county membership that would help decide how to use the funds.

Commissioner Schuler asked for clarity on what restrictions the Commission could place on the use of the funds including items as specific as farm equipment runoff mitigation. Jason Valerius answered that the key measure is whether it can be tied to rural economic development, but that success in farming would appear to fit that restriction.

Commissioner Richson stated that she's in support of rural economic development, but that Wis. Stat. 66.0309(8) restricts CARPC's functions to recommendations and advisory actions. She also noted concerns about CARPC's potential partnership with Greater Madison Chamber of Commerce ("GMCC") given that they advocate on behalf of candidates for office and for the reduction of zoning restrictions. Given these issues, Commissioner Richson would rather see a commissioner be added in a non-voting capacity to a committee of GMCC to oversee these funds.

Commissioner Schuler asked if we could get a legal opinion from our legal counsel on CARPC's statutory capacities. Jason Valerius answered that he would forward the opinion to the Commission once we've received it from counsel.

Commissioner Vidaver asked if anything has changed with GMCC's position on these funds. Jason Valerius answered that GMCC staff is reviewing it with their board leadership over the course of the next month, and that so far staff has been supportive of a CARPC role with these funds. Jason added that the switch from maintaining a revolving loan fund and removal of federal interest in the fund will enable CARPC to assure that its administrative costs are covered, including any activities outside of Dane County.

6. CARPC Resolution 2026-05, Recommending to the Wisconsin DNR an Amendment of the Dane County Water Quality Plan by Adopting Policies and Criteria for Sewer Service Area Amendments (actionable item) (6:06 pm)

Prachi Mehendale provided an overview of the proposed amendment, the handful of changes to the Policies and Criteria since the December draft and January public hearing, and CARPC Resolution 2026-05.

Commissioner Richson stated that she conferred with legal counsel who said she was free to participate in the discussion and action on this agenda item because this item is a matter of general policy that does not involve substantial value, and because the Town of Middleton is not an organization under the applicable ethics statute.

Attorney Michael Lawton noted that public health authorities recognize that the presence of lead in aviation is a public health risk. As a result of these risks, there's a concern that potential amendments concerning airports should not be eligible for the expedited process. Prachi Mehendale clarified that the expedited process doesn't necessitate a reduction in the staff's analysis for water quality impacts and that the same level of work is performed in the expedited process. Jason Valerius also noted that the expedited process also contains provisions that would inhibit a proposed amendment that includes any unmitigated water quality issues from proceeding through the expedited route and would instead be pushed one of the other processes.

Commissioner Richson asked if it would be possible to specifically identify airport operations as something that is controversial for the purposes of the expedited process. Jason Valerius noted that it would indeed be possible but wouldn't be necessary based on the wording of the policies as proposed.

Chair Pfeiffer asked about any limitations that may arise in our authority from DNR as it relates to water quality issues and what actions the Commission can take to divert a proposed amendment from the expedited process to the major amendment process.

Commissioner Richson asked about how the public would be able to flag potential issues in a proposed amendment through the expedited process without such a restriction in the policies. Chair Pfeiffer noted that public comment is still a part of the expedited process.

Jason Valerius added that part of the expedited process is to encourage applicants to begin discussions earlier in the process. As a part of those initial discussions, one of the first questions asked to the potential applicant will be around potential controversies or unmitigated water quality issues.

Chair Pfeiffer asked if the concern is about potential applications that include the airport itself, or also applications that are within 5 miles of the airport. Attorney Lawton answered that a concern around this restriction would be an airport that is expanding its service area to include additional facilities within the grounds of the airport.

Commissioner Schuler asked for clarification about how the expedited process allows for the proposed amendment to be shifted to the standard SSA amendment process and how that process impacts the overall timeline of the application. Chair Pfeiffer noted that the added benefit of the expedited process here would be identifying the potential issues earlier in the process before the timing restrictions apply.

Motion: Commissioner Schuler moved to amend Section 3.01 C to include language indicating that SSA amendments that would enable the expansion of a general aviation airport would not be eligible for the expedited process. Commissioner Richson seconded.

Discussion: Commissioner Richson noted that additional time for public comment might help the process.

Chair Pfeiffer added that the expedited process actually includes a higher bar of review by asking more of the applicant by allowing more time for work with staff in advance.

Motion: Commissioner Schuler moved to amend the motion to ask staff to present alternative language to the Commission that would consider what other uses should also be disqualified from the expedited process. Commissioner McKeever seconded.

On the motion to amend the motion to ask staff to present alternative language to the Commission, the motion carried unanimously.

Discussion: Jason Valerius expressed concerns about having staff spend additional time identifying uses likely to have unmitigated water quality concerns, suggesting that it is not necessary to pre-designate what might or might not be a concern in the future and noting that there is a low bar to delaying approval and falling back to the conventional, 90-day process.

Motion: Commissioner Schuler moved to amend Section 3.01 C to return to the earlier version, with language indicating that SSA amendments that would enable the expansion of a general aviation airport would not be eligible for the expedited process. Commissioner Richson seconded.

On the motion to amend the motion to amend Section 3.01 C, the motion carried unanimously.

On the motion to amend Section 3.01 C, the motion carried unanimously.

Motion: Commissioner Lieberman moved to approve Resolution 2026-05, Recommending to the Wisconsin DNR an Amendment of the *Dane County Water Quality Plan* by Adopting *Policies and Criteria for Sewer Service Area Amendments*. Commissioner Richson seconded.

The motion carried unanimously.

7. CARPC Resolution 2026-06, Adopting a Fee Policy for the Review of Sewer Service Area Amendments (*actionable item*) (7:22 pm)

Prachi Mehendale provided an overview of the proposed amendment and the fee policy.

Commissioner McKeever asked about how the amounts in the fee resolution were reached. Prachi Mehendale answered that they were based on a review of previous amendments.

Motion: Commissioner Schuler moved to approve Resolution 2026-06, Adopting a Fee Policy for the Review of Sewer Service Area Amendments. Commissioner Dalsoren seconded.

The motion carried unanimously.

8. Regional Development Framework Key Performance Indicators – Staff Presentation and Discussion (7:49 pm)

Liz Levy provided an overview of the key performance indicators identified in the Regional Development Framework (“RDF”).

Commissioner McKeever asked about the source of the RDF’s specific percentage point goals. Liz Levy answered that the goals are included in the RDF itself and Jason Valerius added that the goals were based as least in part on available data at the time with a goal of improving outcomes as compared to those existing conditions.

Commissioner Richson asked for more information about the time requirements in collecting data compared to preparing dashboards and data visualization tools. Liz Levy answered that data collection is typically more time-consuming than building the dashboard. Jason Valerius noted that indicator effort varies wildly from just sharing existing numbers collected and reported by our partners to extensive data collection and analysis projects.

9. Reports (8:09 pm)

a. Commission Chair

None

b. Executive Director

- (1) Program and Services Updates
- (2) Partnership Updates

Jason Valerius provided highlights from the Executive Director’s report.

10. Future Agenda Items (next meeting April 9, 2026, via Zoom Webinar, 6:00 pm meeting start time)

- a. Consideration for Action – Acceptance of MadREP/USDA Revolving Loan Fund assets and structure for guiding use of the funds (April)
- b. Proposed Amendment of the *Dane County Water Quality Plan* by Adopting Revised *Environmental Corridor Policies and Criteria* – Staff Presentation (April)
- c. Discussion of framework with the Madison Metropolitan Sewerage District for CARPC to support implementation of Badger Mill Creek resilience improvement projects (April)
- d. Review of CARPC approach to public engagement related to sewer service area amendments (May)
- e. Visits/presentations by Allied Organizations – TBD

11. Adjournment

Motion: Commissioner Richson moved to adjourn, seconded by Commissioner Vidaver.

The motion carried unanimously. The meeting was adjourned at 8:23 pm.



JOB DESCRIPTION SENIOR ENVIRONMENTAL ENGINEER

DRAFT April 3, 2026

The Senior Environmental Engineer supports CARPC's efforts to protect the region's natural water resources and ecosystem services across our region in collaboration with many stakeholders, especially municipalities, land developers, and the Wisconsin Department of Natural Resources.

Summary

This position's primary work responsibilities include reviewing engineering plans, wastewater facilities planning documents, and stormwater management plans for consistency with the adopted areawide water quality management plan. The Senior Environmental Engineer collects, analyzes, and communicates water resource and other ecosystem services data; monitors development and environmental planning activities throughout the region; and leads and/or contributes to reports and analyses related to environmental systems planning and protection for the Commission and communities within the region.

Knowledge of stormwater management design and regulation and understanding of land development planning and design services are critical to success in this role.

Key Responsibilities

- **Stormwater & Wastewater Planning and Plan Review**
 - Review site engineering plans and stormwater management plans, including assessing stormwater modeling and impacts to environmental resources
 - Review capacity analyses of wastewater collection and treatment systems
 - Contribute to stormwater management and infrastructure planning services for the region, which may include watershed planning services and conceptual stormwater management design and modeling
- **Environmental Analysis & Data Management**
 - Assess impacts on natural resources utilizing various datasets
 - Gather, interpret, and prepare data for Agency studies and reports
 - Maintain and interpret existing digital datasets using geographical information systems (GIS) tools
 - Assist with creation of custom web mapping applications and projects for staff and partners

- **Water Quality Planning & Policy Development**
 - Prepare recommendations, reports, and related information for decision-making purposes
 - Provide technical and professional advice on water and environmental resources management
- **Interagency Coordination & Public Engagement**
 - Respond to inquiries from local municipal staff, engineering consultants, other public agencies, and the public
 - Coordinate Agency activities with other departments/agencies as needed
 - Represent the Agency in technical forums
 - Provide and present information to the Commission
- **Professional Leadership**
 - Stay abreast of trends, regulations, and developments in the field of environmental and water resource engineering
 - Take interest and contribute positively to the function of the Agency
 - Provide mentorship for junior CARPC staff working in the Water Quality Program and support their professional growth

Qualifications Required

- Bachelor's degree in Civil Engineering, Environmental Engineering, Water Resources Engineering, or a closely related engineering field, from an accredited college or university. A master's degree in a related field is a plus.
- A minimum of four years of experience in stormwater management design, civil site development design or review, and/or water quality planning. Experience with water distribution and sanitary sewer analysis/design or review is a plus.
- Technical knowledge in a range of areas including wastewater and water supply systems, hydrologic and hydraulic analysis, stormwater management, water quality and water resources management planning and engineering, and environmental resources management planning.
- Knowledge and experience in stormwater modeling programs (primarily HydroCAD, WinSLAMM, and RECARGA; other modeling proficiency is a plus).
- Experience in the use of geographical information systems (GIS) software preferred.
- Skill in data analysis and writing technical and non-technical reports and articles.
- Strong verbal and written communication skills and ability to work both independently and with internal and external stakeholders.

Certifications: None Required

Licenses: Current registration as a Professional Engineer (PE) in Wisconsin, or the ability to be licensed within 1 year of the start of employment

Salary Range: \$101,966 to \$124,589 annually (Steps 1-9, as of January 1, 2026)

FLSA Status: Exempt

Reports to: Executive Director (or in the absence of an Executive Director, the Agency Director)

Physical Demands

Frequently required to see, talk, and hear. Frequent repetitive movement of hands and fingers for typing and/or writing. Limited fieldwork may be required, necessitating standing, walking long distances, stooping, kneeling, crouching, or reaching with hands and arms. Must occasionally lift and/or move up to 20 pounds.

Work Environment

Work is generally performed within an office environment, with standard office equipment available. Limited fieldwork may be required, potentially resulting in exposure to outside weather conditions. Ability and means to travel on a flexible schedule as needed to attend some meetings, including some regular evening meetings; proof of liability and property damage insurance on vehicle used is required.

Work Location and Travel

The Senior Environmental Engineer position requires a regular in-person presence in the Madison office, with some opportunity for remote work. The job also requires travel around Dane County and occasionally outside the county to support engagement with area stakeholders and partners.

Commitment To Equity & Inclusion

As an employer, we strive to provide a work environment where diversity of experience and perspective are valued, creativity is encouraged, continuous learning and improvement are fostered, teamwork and open/honest communication are expected, and meeting customer needs through quality service is a priority for all. All employees must demonstrate the ability to work effectively with people from different cultural and socioeconomic backgrounds, including professional counterparts, local officials, and residents. Applicants from populations traditionally underrepresented in scientific and engineering settings, including women, racial and ethnic minorities, and persons with disabilities, are especially encouraged to apply.

Disclaimer

This position description reflects the Agency's assignment of essential functions; and nothing herein restricts the Agency's right to assign or reassign duties and responsibilities to this position at any time.



JOB DESCRIPTION WATER QUALITY PROGRAM DIRECTOR

DRAFT April 3, 2026

This is an “add-on” role that can be combined with a senior-level environmental planner or engineer position in the Agency.

Working closely with the Executive Director and staff who contribute to the Water Quality Program, the Water Quality Program Director provides strategic leadership for the advancement of the program and oversight of its projects and activities.

Success in this role requires a strategic thinking, effective communication, strong collaboration, and demonstration of a firm understanding of both the technical and political aspects of water quality and environmental resource protection. The Water Quality Program Director is responsible for helping guide the program, administration of the *Dane County Water Quality Plan (DCWQP)*, and understanding and responding effectively to the varied interests that contribute to and are affected by Agency efforts to protect the region’s natural water resources and ecosystem services.

The following lists of duties are intended to supplement the base duties described in the candidate’s underlying job description.

Strategic Direction

- Identify emerging issues and opportunities for collaboration that align with the DCWQP
- Seek opportunities to advance water quality protection practices through the periodic refinement of our regulatory tools
- Identify and pursue funding support for water quality projects in the region
- Help track and evaluate the performance and impact of the Water Quality Program

Leadership and Relationships

- Coordinate the efforts of Agency staff to update and administer the areawide water quality management plan in collaboration with engineering consultants, municipal officials, the Wisconsin Department of Natural Resources, and the public
- Help to assemble and sustain implementation coalitions among various public and private entities interested in the protection and improvement of certain waterways
- Foster strong working relationships with municipal partners, state and regional agencies, and community organizations engaged in water quality protection
- Provide mentorship for other CARPC staff working in the Water Quality Program and support their professional growth; help to monitor and support job satisfaction among staff working primarily in the Water Quality Program

Minimum Education & Experience Requirements: 2 years of experience within CARPC preferred

Certifications: None required

Licenses: None required

Salary Range: \$4,308 to \$4,550 annually (Steps 1-9, as of January 1, 2026)

FLSA Status: Exempt

Reports to: Executive Director (or in the absence of an Executive Director, the Agency Director)

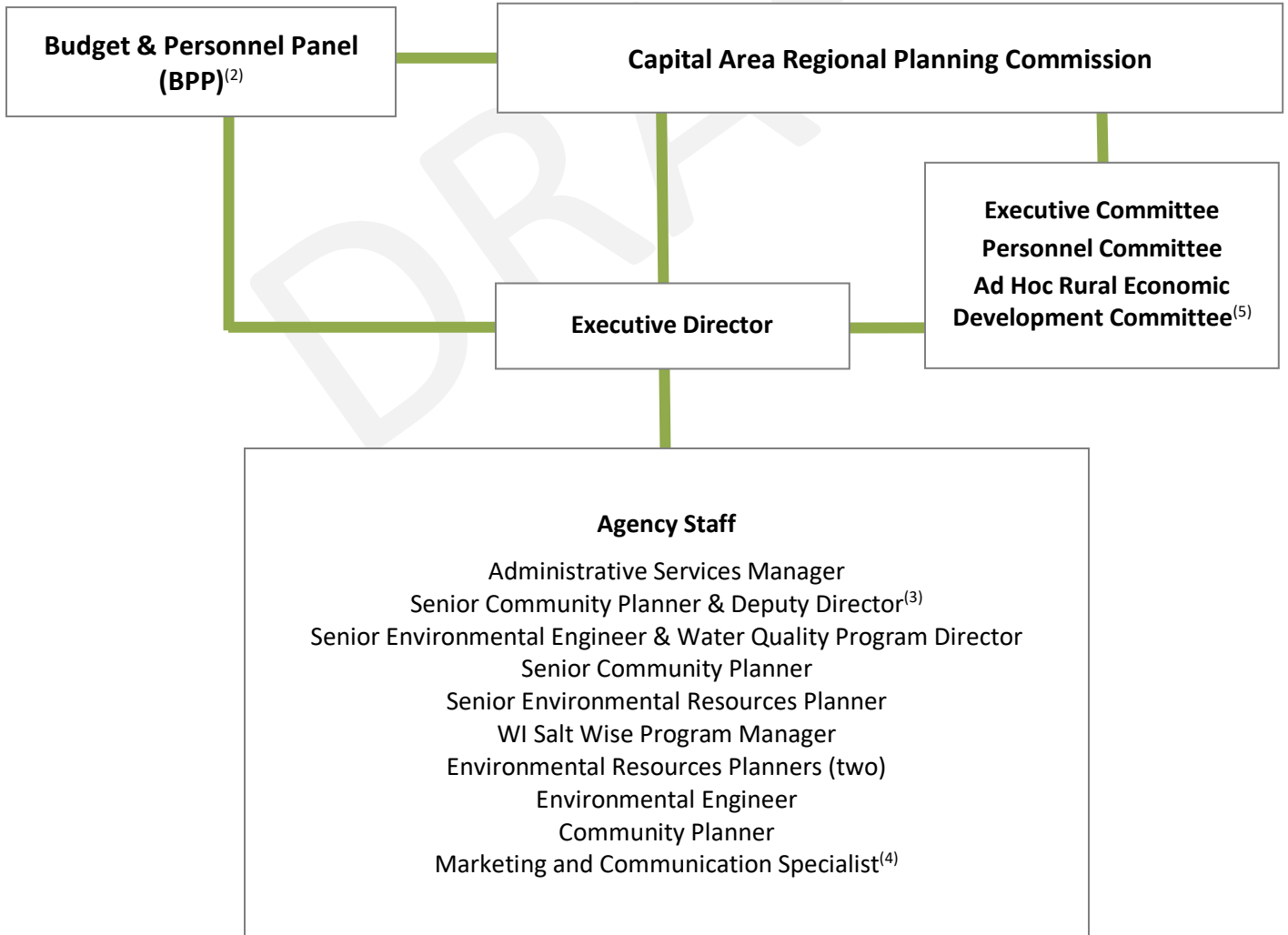
Disclaimer

This position description reflects the Agency's assignment of essential functions; and nothing herein restricts the Agency's right to assign or reassign duties and responsibilities to this position at any time.



CARPC ORGANIZATIONAL CHART

(Effective April 9, 2026) ⁽¹⁾



Notes:

- (1) This version incorporates the designation of the Senior Environmental Engineer as also the Water Quality Program Director
- (2) The BPP has the power to approve the CARPC budget and levy and hire or fire the Executive Director, as described in Article IV of the CARPC Bylaws
- (3) Title VI Officer
- (4) Greater Madison MPO staff, under contract to CARPC for 25% time
- (5) The Ad Hoc Rural Economic Development Committee will be included in the adopted version of this chart if and when it is created by the Commission

Re: Acknowledgement of Receipt – February 2026 Financial Management Report (*actionable item*)**Requested Action:**

Motion to acknowledge receipt of February 2026 Financial Management Report

Background:

Continuous process improvement is the goal of the Agency regarding its financial systems, policies and procedures.

Each month the Administrative Services Manager prepares a full financial packet for review by the Executive Director and Commission Treasurer, who each sign off on the packet when they are satisfied that it is an acceptable representation of the Commission's fiscal condition.

The Executive Committee and Commission then receive copies of the Management Report supplied by Berndt CPAs for review at the monthly meetings.

Staff Comments:

Requests for additional financial information or reports may be directed to the Administrative Services Manager.

Attachments:

1. February 2026 Financial Management Report

Staff Contact:

Matt Koz
Administrative Services Manager
MatthewKoz@CapitalAreaRPC.org
608-474-6017

Next Steps:

Continual improvements to the CARPC financial systems, policies, and procedures.

Management Report

Capital Area Regional Planning Commission
For the period ended February 28, 2026



DRAFT

Prepared by
Berndt CPA

Prepared on
March 26, 2026

Table of Contents

Notes to the Monthly Financial Statements..... 1

Statement of Financial Position – Comparable to Prior Period..... 2

Statement of Activity: Budget vs Actuals 12 months Ended..... 4

Accounts Receivable Aging Summary 7

DRAFT

Notes to the Monthly Financial Statements

To Capital Area Regional Planning Commission,

Provided is some additional context regarding the deferred revenue and related activity for the month of February 2026.

Deferred revenue represents funds that have been invoiced or received in advance for services that have not yet been performed. It also includes contracts or related grants established at the beginning of the year, or early in the year, that relate to work performed throughout the year and are invoiced periodically. These amounts are recognized as revenue over time to more accurately align associated expenses with the related revenue.

For February, \$132,249.04 was recognized from deferred revenue related to contracts established at the beginning of the year. An additional \$12,803.53 represents new invoiced revenue generated from current work not associated with deferred revenue.

As of February month-end, the balance in account 3600 – Deferred Revenue is at \$925,878 per knowledge of remaining balances of current contracts and received donations and taxes.

February's financials currently do not reflect any audit adjustments that may occur related to year end 2025. After the audit, finalized financials for this period will be released to include those adjustments.

Sincerely,
Berndt CPA, LLC

Capital Area Regional Planning Commission
Statement of Financial Position
As of February 28, 2026

	Total	
	As of Feb 28, 2026	As of Jan 31, 2026 (PP)
ASSETS		
Current Assets		
Bank Accounts		
1000 OPERATING ACCOUNT	634,654	21,395
1001 MONEY MARKET ACCOUNT	48,072	68,090
1002 INVESTMENT ACCOUNT	389,298	488,108
Total Bank Accounts	\$ 1,072,023	\$ 577,593
Accounts Receivable		
1105 PROJECT AND GRANTS REC	145,874	780,748
Total Accounts Receivable	\$ 145,874	\$ 780,748
Other Current Assets		
1110 UNBILLED ACCOUNTS RECEIVABLE	580,592	585,715
1150 PREPAID EXPENSES	0	0
1153 PREPAID HEALTH INSURANCE	28,143	31,416
1154 PREPAID DISABILITY INSURANCE	122	0
1156 PREPAID LIFE INSURANCE	(151)	(209)
1157 PREPAID PARKING	189	190
1165 PREPAID LICENSES	6,263	6,889
Total 1150 PREPAID EXPENSES	\$ 34,565	\$ 38,285
1170 UNDEPOSITED FUNDS	3,632	1,805
Total Other Current Assets	\$ 618,789	\$ 625,806
Total Current Assets	\$ 1,836,686	\$ 1,984,147
Fixed Assets		
1200 FURNITURE AND EQUIPMENT	7,172	7,172
1201 ACCUMULATED DEPRECIATION-FURNITURE/EQUIPMENT	(7,172)	(7,172)
Total 1200 FURNITURE AND EQUIPMENT	\$ -	\$ -
1210 RIGHT OF USE ASSET	6,077	6,077
1211 ACCUMULATED AMORTIZATION	(3,562)	(3,528)
Total Fixed Assets	\$ 2,515	\$ 2,549
TOTAL ASSETS	\$ 1,839,201	\$ 1,986,695
LIABILITIES AND EQUITY		
Liabilities		
Current Liabilities		
Accounts Payable		
3000 ACCOUNTS PAYABLE	8,743	25,386
Total Accounts Payable	\$ 8,743	\$ 25,386
Credit Cards		
3002 PARK BANK CREDIT CARD	0	0
3003 CREDIT CARD	3,704	2,465
Total 3002 PARK BANK CREDIT CARD	\$ 3,704	\$ 2,465
Total Credit Cards	\$ 3,704	\$ 2,465
Other Current Liabilities		
3005 ACCRUED PAYROLL	38,419	39,986
3010 ACCRUED COOP WATER RESOURCE MONITORING	32,403	16,201

3015 ACCRUED PREPAID LIABILITIES	2,071	2,278
3202 WRS PENSION PLAN	11,623	11,534
3300 UNUSED VACATION, WELLNESS	63,268	60,786
3500 SICK LEAVE ACCRUAL PAY	99,850	95,753
3600 DEFERRED/UNEARNED REVENUE	925,878	1,058,127
3655 INVEST IN RIGHT OF USE	2,987	2,987
Total Other Current Liabilities	\$ 1,176,498	\$ 1,287,652
Total Current Liabilities	\$ 1,188,945	\$ 1,315,503
Total Liabilities	\$ 1,188,945	\$ 1,315,503
Equity		
3700 PRIOR YEAR BALANCE	(181,416)	(181,416)
3701 PRIOR YEAR FUND BALANCE	908,395	908,395
3702 CURRENT FUND BALANCE	200	200
Net Revenue	(76,924)	(55,987)
Total Equity	\$ 650,255	\$ 671,192
TOTAL LIABILITIES AND EQUITY	\$ 1,839,201	\$ 1,986,695

DRAFT

Capital Area Regional Planning Commission
Budget vs. Actuals: Statement of Activity
For the month of February - Budget Vs Actuals 2 Months Ended

	Total			
	Monthly Actual	Actual Year to Date	Annual Budget	% of Annual Budget
Revenue				
5000 PROPERTY TAX REVENUE	-	-	-	
5001 DANE COUNTY PROP TAX-OTH	96,747	193,493	1,160,959	16.67%
Total 5000 PROPERTY TAX REVENUE	96,747	193,493	1,160,959	16.67%
5100 STATE/FEDERAL GRANTS	-	-	-	
5101 EPA/DNR WATER PLANNING	9,917	19,833	134,000	14.80%
5102 EPA/DNR GRANT FUNDS	-	-	-	
5103 WEM/FEMA/HMGP GRANT FUNDS	13,021	26,042	125,000	20.83%
5104 WisDOT PLAN INTEGRATION	1,046	2,092	5,457	38.33%
Total 5100 STATE/FEDERAL GRANTS	23,983	47,967	264,457	18.14%
5150 OTHER GRANTS	5,000	5,000	-	
5200 PASS THROUGH REVENUE	-	-	-	
5201 WisDOT RURAL WORK PROGRAM	-	-	7,093	0.00%
5220 COOP WATER RESOURCE MONITORING	5,146	10,292	68,200	15.09%
Total 5200 PASS THROUGH REVENUE	5,146	10,292	75,293	13.67%
5300 FEES REVENUE	-	-	-	
5301 FEES - SEWER EXTENSIONS	4,600	5,800	45,000	12.89%
5302 FEES - USA/LSA APP REVIEW	-	-	65,000	0.00%
Total 5300 FEES REVENUE	4,600	5,800	110,000	5.27%
5400 SERVICES REVENUE	-	-	-	
5401 LOCAL & REGIONAL PLAN ASSISTANCE	123	206	140,000	0.15%
Total 5400 SERVICES REVENUE	123	206	140,000	0.15%
5500 OTHER REVENUE	-	-	-	
5208 LAND USE CODE ASSESSMENT	-	-	-	
5501 INTEREST INCOME	1,198	2,857	32,000	8.93%
5502 MISCELLANEOUS REVENUES	6	12	3,123	0.38%
5505 WI SALT WISE	8,250	14,565	140,000	10.40%
Total 5500 OTHER REVENUE	9,454	17,434	175,123	9.96%
7000 REVENUE REFUNDS	-	-	-	
Total Revenue	145,053	280,191	1,925,832	14.55%
Gross Profit	145,053	280,191	1,925,832	14.55%
Expenditures				
6000 SALARIES AND LEAVE TIME	-	-	-	
6001 DIRECT SALARIES & WAGES	75,007	133,831	903,822	14.81%
6002 COMPENSATED LEAVE TIME	13,935	69,978	198,400	35.27%
Total 6000 SALARIES AND LEAVE TIME	88,942	203,809	1,102,222	18.49%
6050 FRINGE BENEFITS	-	-	-	
6051 FICA BENEFITS	6,322	12,517	82,115	15.24%
6052 LIFE INSURANCE	(37)	(75)	309	-24.14%
6053 HEALTH INSURANCE	30,188	53,829	329,364	16.34%
6054 DENTAL INSURANCE	2,354	3,428	15,369	22.30%
6055 WRS-ER CONTRIBUTION	5,811	11,578	73,440	15.77%
6056 DISABILITY INSURANCE	-	-	534	0.00%
6057 COMMUTE CARDS	204	346	200	172.85%
6058 UNEMPLOYMENT	50	489	1,000	48.93%

6059 WORKER'S COMPENSATION	-	-	2,771	0.00%
Total 6050 FRINGE BENEFITS	44,892	82,112	505,102	16.26%
6100 OCCUPANCY	-	-	-	
6101 RENT	4,382	8,765	51,833	16.91%
Total 6100 OCCUPANCY	4,382	8,765	51,833	16.91%
6200 CONTRACTED SERVICES	-	-	-	
6201 EXTERNAL PROGRAMS	-	-	-	
6202 LEGAL SERVICES	905	1,946	6,000	32.43%
6203 COMMISSION OPERATIONS	-	-	21,000	0.00%
6204 MARKETING AND COMMUNICATIONS	2,991	2,991	-	
Total 6200 CONTRACTED SERVICES	3,895	4,937	27,000	18.28%
6300 FINANCIAL SERVICES	-	-	-	
6301 AUDIT	-	-	15,435	0.00%
6302 PAYROLL FEES	622	1,554	5,250	29.60%
6303 FINANCIAL SERVICES	25	2,875	42,000	6.85%
Total 6300 FINANCIAL SERVICES	647	4,429	62,685	7.07%
6400 TRAVEL AND TRAINING	-	-	-	
6401 EMPLOYEE TRAVEL	291	490	13,349	3.67%
6402 MEALS	-	-	907	0.00%
6403 CONFERENCES & MEETINGS	215	1,422	9,638	14.75%
6404 TRAINING	-	-	3,000	0.00%
Total 6400 TRAVEL AND TRAINING	506	1,912	26,894	7.11%
6500 OFFICE EXPENSES	-	-	-	
6501 SUPPLIES	145	384	3,860	9.94%
6502 PRINTING	141	141	1,558	9.03%
6503 POSTAGE	28	28	105	26.55%
6504 EQUIPMENT	103	103	8,925	1.15%
6505 TELEPHONE	165	495	1,500	33.00%
6506 ADMINISTRATIVE FEES	-	4	442	0.93%
6902 CONTRIBUTIONS & DONATIONS	-	-	2,500	0.00%
Total 6500 OFFICE EXPENSES	582	1,154	18,890	6.11%
6600 INFORMATION TECHNOLOGY	-	-	-	
6601 WEBHOSTING	195	213	368	57.93%
6602 SOFTWARE	1,296	2,822	17,220	16.39%
6603 IT SERVICES	352	952	8,000	11.90%
Total 6600 INFORMATION TECHNOLOGY	1,843	3,988	25,588	15.58%
6700 COMMISSION	-	-	-	
6701 COMMISSION PER DIEMS	300	650	8,000	8.13%
6702 COMMISSION TRAVEL	77	77	840	9.15%
Total 6700 COMMISSION	377	727	8,840	8.22%
6800 PASS THROUGH EXPENSES	-	-	-	
6801 WATER RESOURCE MONITORING	16,201	32,403	68,200	47.51%
6802 WisDOT PLANNING SERVICES	2,009	2,009	5,457	36.82%
Total 6800 PASS THROUGH EXPENSES	18,210	34,412	73,657	46.72%
6900 OTHER	-	-	-	
6901 DUES/MEMBERSHIPS/SUBSCRIPTIONS	34	1,793	7,186	24.95%
6903 EDUCATION/INFO/OUTREACH	1,494	1,494	1,500	99.62%
6904 RECRUITMENT	150	150	1,050	14.29%
6905 INSURANCE	-	7,366	4,709	156.42%
6906 DEPRECIATION	-	-	-	
6907 AMORITIZATION EXPENSE	34	68	608	11.11%
Total 6900 OTHER	1,712	10,871	15,053	72.22%
Uncategorized Expense	-	-	-	

Total Expenditures
Net Operating Revenue
Net Revenue

165,989	357,115	1,917,764	18.62%
(20,936)	(76,924)	8,068	-953.44%
(20,936)	(76,924)	8,068	-953.44%

DRAFT

Capital Area Regional Planning Commission
A/R Aging Summary
As of February 28, 2026

	Current	1 - 30	31 - 60	61 - 90	91 and over	Total
Arc Design Resources, Inc.	1,000					1,000
Ayers Associates, Inc.					1,000	1,000
City of Altoona	1,000					1,000
City of Evansville						0
245402 - Evansville Bike-Ped Plan		5,326				5,326
Total City of Evansville	\$ -	\$ 5,326	\$ -	\$ -	\$ -	\$ 5,326
City of Madison Engineering Division	400					400
D'Onofrio Kottke and Associates	400					400
Dane County Land Conservation					85,075	85,075
Department of Planning, Community and Economic Development					2,869	2,869
Dodge County Highway Department					1,500	1,500
Homburg Contractors, Inc.					400	400
Jewell Associates Engineers, Inc.					400	400
JSD PROFESSIONAL SER					800	800
MDRoffers Consulting LLC						0
255103 - Trends and Conditions		2,200				2,200
Total MDRoffers Consulting LLC	\$ -	\$ 2,200	\$ -	\$ -	\$ -	\$ 2,200
Moraine Park Technical College	1,000					1,000
MSA Professional Services, Inc.	400				1,600	2,000
Outagamie County Highway					500	500
PINNACLE ENGINEERING					400	400
raSmith	400					400
Snyder & Associates, Inc.	1,000					1,000
Southwestern Wisconsin Regional Planning Commission-c						0
255401 - SWWRPC Strategic Planning		8,921				8,921
Total Southwestern Wisconsin Regional Planning Commission-c	\$ -	\$ 8,921	\$ -	\$ -	\$ -	\$ 8,921
Town of Berry						0
255102 - T-Berry - Opt Out Town Billing		82				82
Total Town of Berry	\$ 82	\$ -	\$ -	\$ -	\$ -	\$ 82
Town of Springfield	21					21
Town of Sun Prairie	21					21
VANDE HEY					800	800
Vierbicher	1,000				800	1,800
Village of Black Earth					8,000	8,000
Village of Deforest					3,070	3,070
WI Department of Natural Resources					14,090	14,090
Wyser Engineering, LLC		600	400		400	1,400
TOTAL	\$ 6,723	\$ 17,047	\$ 400	\$ -	\$ 121,704	\$ 145,874

Re: CARPC Resolution 2026-07, Honoring Caryl Terrell for Service to the Capital Area Regional Planning Commission (*actionable item*)

Requested Action:

Adopt CARPC Resolution 2026-07

Background:

After more than 15 years of dedicated service, Commissioner Caryl Terrell resigned from the Capital Area Regional Planning Commission effective January 29, 2026.

Staff Comments:

None

Attachments:

1. CARPC Resolution 2026-07 Honoring Caryl Terrell for Service to the Capital Area Regional Planning Commission

Staff Contact:

Caitlin Shanahan
Deputy Director
CaitlinS@CapitalAreaRPC.org
608-474-6021

Next Steps:

None



CARPC Resolution No. 2026-07

Honoring Caryl Terrell for Her Service to the
Capital Area Regional Planning Commission

WHEREAS, Caryl Terrell served as a member of the Capital Area Regional Planning Commission from March 2010 through January 2026, having been appointed by the Dane County Executive; and

WHEREAS, Ms. Terrell brought to CARPC the knowledge, experience, and passion developed over a lifetime of service to public and nonprofit organizations, including over 30 years as the Executive Director of the Sierra Club and over 20 years on the Madison Metropolitan Sewerage District Board; and

WHEREAS, Ms. Terrell also played a key role in establishing many of the programs and policies that still shape Wisconsin's environmental protection landscape today, including the Wisconsin Environmental Policy Act, the Wisconsin Coastal Management Program, and state-level implementation of the National Environmental Policy Act, as an employee of the Wisconsin Department of Administration; and

WHEREAS, Ms. Terrell has been a tireless advocate for water quality, land use planning, environmental protection, equity, and farmland preservation throughout her service to CARPC; and

WHEREAS, Ms. Terrell went above and beyond her duties to actively engage in CARPC initiatives including A Greater Madison Vision, the 2050 Regional Development Framework, and multiple strategic planning processes; and

WHEREAS, Ms. Terrell helped guide CARPC's efforts to better integrate land use and water quality planning with other disciplines, enhance Agency communication with Dane County communities and stakeholders, and strengthen collaborative relationships.

NOW, THEREFORE, BE IT RESOLVED that the Capital Area Regional Planning Commission hereby expresses its sincere gratitude and appreciation to Caryl Terrell for her service and contribution to this organization, to the Capital Region, and to the State of Wisconsin.

April 9, 2026
Date Adopted

David Pfeiffer, Chairperson

Cynthia Richson, Secretary

Re: Proposed Amendment of the *Dane County Water Quality Plan* by Adopting Revised *Environmental Corridor Policies and Criteria* – Staff Presentation and Discussion**Requested Action:**

None

Background:

Environmental Corridors (EC) are a key component of CARPC's role in administration of the *Dane County Water Quality Plan* and are mapped within Sewer Service Areas in our region. The existing [Environmental Corridors Policies and Criteria](#) (Policies and Criteria) were adopted in 2008 as part of the *Dane County Water Quality Plan*. These policies set requirements and guide the implementation of Environmental Corridors.

During the process of updating the [Environmental Corridors Report \(2025\)](#), staff identified gaps and opportunities for improvement in the existing Policies and Criteria. Beginning in May 2025, staff have completed a comprehensive analysis of the existing policies, drafted an updated policy document (see Attachment 1), and consulted with Wisconsin DNR Water Quality staff, technical experts with knowledge of the features Environmental Corridors protect, and focus groups representing partners, regulated municipalities and land developers to further refine policy revisions.

Staff Comments:

Based on staff review and stakeholder feedback, changes to the Policies and Criteria related to Environmental Corridor delineation and reorganization/clarification are proposed (see Attachment 2). In general, these updates seek to clarify and reduce ambiguities, align the policies with how they have been implemented based on interpretation and available data, and enhance protections or offer exemptions based on new information and stakeholder input. A new classification system of "Required Areas" and "Voluntary Areas" is proposed to retain for consideration and encourage the protection of features that are less immediately critical to water quality protection but desirable for protection from development.

These updates constitute an amendment to the *Dane County Water Quality Plan*. A public hearing will be held at a future Commission meeting (tentatively May 14, 2026). Assuming favorable action by the Commission (tentatively June 11, 2026), the proposed amendment will be sent to WDNR for review and administrative approval.

Attachments:

1. Draft Revision to Environmental Corridors Policies and Criteria
2. Short Summary of Changes

Linked Documents:

3. [Summary of Stakeholder Input](#)

Staff Contact:

Melissa Michaud
Environmental Resources Planner
MelissaM@CapitalAreaRPC.org
608-474-6020

Next Steps:

Assuming no significant concerns or issues raised, staff will finalize all materials, incorporating any additional feedback received, and prepare for a public hearing and possible Commission action at a future meeting.

Policies and Criteria for Environmental Corridors

Dane County Water Quality Plan

Capital Area Regional Planning Commission

(DRAFT April 1, 2026)

Contents

Section 1	General	1
Section 2	Definitions	2
Section 3	Implementation	3
Section 4	Areas for Inclusion	3
a)	Required Areas	4
b)	Voluntary Areas	4
Section 5	Permitted Uses	5
a)	Incompatible Uses	5
b)	Compatible Uses	6
Section 6	Exemptions	6
Section 7	Changes to Environmental Corridors	7
a)	Major Changes	7
b)	Administrative Changes	7

SECTION 1 GENERAL

As defined in the [Dane County Water Quality Plan \(DCWQP\)](#), **Environmental Corridors** are a network of open space and natural areas in places that are otherwise urbanized or planned for urban development. These corridors include environmentally sensitive lands, natural and cultural resources requiring protection from disturbance and development, and lands needed for open space, stormwater management, and recreational use.

The [Environmental Corridors Report](#) identifies seven open space functions of Environmental Corridors: protection of resources and critical environmental processes; protection of public health, safety and property; outdoor recreation and education; scenic beauty; protection of archeological and geological resources; stormwater management; and climate resilience.

33 Pursuant to [Wis. Admin. Code § NR 121.05\(1\)\(g\)2.c.](#), certain lands must be excluded from development
34 that requires waste treatment systems "because of the potential for adverse impacts on the quality of
35 the waters of the state." The features to be considered for protection "include but are not limited to
36 wetlands, shorelands, floodways and floodplains, steep slopes, highly erodible soils and other limiting
37 soil types, groundwater recharge areas, and other such physical constraints." Environmental Corridors
38 also connect and protect other features that advance local and regional interests, such as
39 archeological sites, sensitive habitats, and public parks. The *Policies and Criteria for Environmental*
40 *Corridors* (this document; hereinafter, these *Polices and Criteria*) sets requirements and guides the
41 implementation of Environmental Corridors.

42 SECTION 2 DEFINITIONS

43 (i) High-Quality Woodlands

44 Woodlands that retain a high proportion of native vegetation, typically characterized by scattered,
45 mature canopy trees. These systems maintain intact ecological structure and processes, support high
46 levels of biodiversity, and exhibit largely undisturbed soil conditions, having avoided plowing, intensive
47 grazing, and other forms of significant degradation.

48 (ii) Ordinary High Water Mark (OHWM)

49 As defined by WDNR¹, the point on the bank or shore of a waterway up to which the presence and action
50 of the water is so continuous as to leave a distinct mark either by erosion, destruction of terrestrial
51 vegetation, or other easily recognized characteristics. In lieu of an available OHWM, the top of bank can
52 be used for purposes of defining setbacks and Environmental Corridors.

53 (iii) Riparian

54 Describes the area along the edge of a water body (i.e., streams, lakes, ponds) or wetland that falls
55 within the [vegetated buffer](#) required by these *Policies and Criteria*. If a [steep slope](#) or woodland starts
56 within the riparian area and extends beyond it, the entirety of that feature is considered riparian,
57 terminating either 300 feet from the water body or wetland edge or at the point where runoff no longer
58 flows directly to that waterbody or wetland, whichever is less.

59 (iv) Sewer Service Areas (SSA)

60 Planning areas identified in the *DCWQP* which include existing sewer areas and adjacent land most
61 suitable for new development, as well as environmentally sensitive areas where development would
62 have an adverse impact upon water quality. In the Dane County region, sewer service areas have
63 historically been further defined as either Urban Service Areas or Limited Service Areas.

64 (v) Steep Slopes

65 Slopes having a 12% or greater gradient in the glaciated portions of the county; or having a 20% or
66 greater gradient in the driftless² portion of the county.

¹ See WDNR [Navigability and Ordinary High Water Mark Determinations](#) webpage

² See WGNHS [Publications Catalog](#)

67 **(vi)Vegetated Buffer**
68 A vegetated area along a wetland or water body that serves to protect water quality and other
69 ecosystem processes by filtering pollutants, preferably containing native³ vegetation appropriate for
70 local conditions.

71 **SECTION 3 IMPLEMENTATION**

72 These *Policies and Criteria* apply to all sewer service areas identified in the *DCWQP*. Environmental
73 Corridors are mapped for all sewer service areas within Dane County. Mapping is for visual reference
74 only and may not reflect the most accurate information available; always consult with CARPC Staff for
75 verification of accuracy of Environmental Corridor mapping.

76 Environmental Corridor boundaries are continually revised and updated based on best-available
77 information. Review and adjustments typically occur during sewer service area amendments and sewer
78 extension reviews, or at any other time with support of the local unit of government. Specific lands within
79 a sewer service area which have been added through an amendment to the boundary may be subject
80 to differing requirements that supersede these *Policies and Criteria*.

81 These *Policies and Criteria* set the regional expectations for lands to be protected from urban
82 development. Local units of government are encouraged to use this land and water protection tool to
83 address local priorities or resources not addressed by these *Policies and Criteria*. Areas not otherwise
84 listed for inclusion in Environmental Corridor within Section 4 (see [Required Areas](#) and [Voluntary Areas](#)
85 below) can be voluntarily proposed for inclusion with consideration to the three general criteria
86 described in detail in the *Environmental Corridors Report*, which are: (a) degree of contribution of an
87 element to an open space function; (b) degree of continuity, connectivity, and linkages; and (c) degree
88 of existing development.

89
90 Local units of government play an active role in the implementation and protection of Environmental
91 Corridors by building protective measures into local ordinances, zoning requirements, plat design
92 review, permitting, and conservation design requirements. These and other regulations, combined with
93 acquisition techniques, help ensure the integrity of the corridors (see further discussion within Appendix
94 C of the *Environmental Corridors Report*).

95 **SECTION 4 AREAS FOR INCLUSION**

96 Areas included in Environmental Corridors are classified into two categories: **required** areas and
97 **voluntary** areas. Required areas are always included in Environmental Corridors, whereas voluntary
98 areas are recommended for protection from development and will be included with support of the
99 local/governing municipality.

³ Native species recommended by WDNR or best available data resources

100 a) Required Areas

- 101 1. Wetlands under WDNR jurisdiction along with a minimum 75-ft vegetated buffer from the
- 102 wetland edge on all sides (as determined by current⁴ WDNR-recognized wetland delineation or
- 103 WDNR-mapped WWI wetlands where field delineation is not available)
- 104 2. Perennial⁵ water bodies (including natural and constructed streams, lakes, ponds, etc.) along
- 105 with a minimum 75-ft vegetated buffer from the ordinary high water mark (OHWM) on all sides
- 106 3. Intermittent⁵⁵ streams (both natural and constructed, but generally excluding drainage
- 107 channels constructed as part of a stormwater management system) along with a vegetated
- 108 buffer that is at least 25 feet from the OHWM and falls within a larger vegetated corridor with a
- 109 minimum total width defined as follows (stream need not be centered within):
- 110 a. If desired to include public recreational path use: 100 ft
- 111 b. If not desired to include public recreational path use: 75 ft
- 112 4. Waters designated as Areas of Special Natural Resource Interest⁶ by WDNR along with a
- 113 minimum vegetated buffer that is at least 75 feet from the OHWM on all sides and falls within a
- 114 minimum 200-ft total width vegetated corridor (water resource need not be centered within)
- 115 5. Stormwater management areas and conveyance channels (generally only engineered
- 116 practices containing open water and/or the use of soil and vegetation for treatment) within an
- 117 outlot, easement, or other defined boundary
- 118 6. 1% annual chance (100-year) floodplains and floodways
- 119 7. Riparian steep slopes
- 120 8. Publicly owned parks, greenways, and conservancy areas (including supporting structures and
- 121 other improvements necessary for the function of these areas)
- 122 9. Archaeological sites on the National Register or identified by Wisconsin Historical Society (WHS)

123 b) Voluntary Areas

- 124 1. Potentially restorable wetlands and areas of hydric soils
- 125 2. 0.2% annual chance (or 500-year) floodplains and floodways
- 126 3. Vegetated buffers for wetlands and other water bodies extending up to 300 feet from the
- 127 wetland edge or OHWM (based on the sensitivity of the resources and level of protection
- 128 desired)
- 129 4. Wooded, steep slopes
- 130 5. Ice Age Trail and Capital Springs Trail Corridors
- 131 6. Internally drained depressional areas (closed basins)
- 132 7. Natural Resource Area Boundaries⁷
- 133 8. Privately owned parks, greenways, and conservancy areas (including supporting structures and
- 134 other improvements necessary for the function of these areas)

⁴ Five years from the date of WDNR confirmation or date of delineation by a [WDNR-assured delineator](#)

⁵ As determined by the [National Hydrography Dataset](#) from the United States Geological Survey; refined based on field assessment or better data (e.g., aerials, contours)

⁶ See list of waters designated on WDNR [Water Quality Standards and Classifications](#) webpage

⁷ Data source managed by Dane County Parks

- 135 9. Endangered and sensitive habitats⁸ (based on consultation with WDNR or other qualified
- 136 personnel) including, but not limited to, remnant or restored prairies and oak savannas
- 137 10. Habitat stepping stones and corridor connections that support local ecological needs⁹
- 138 11. Areas containing subsurface conditions (such as liquified soils, high groundwater, shallow
- 139 porous bedrock, karst features, and known critical recharge areas with a direct conduit to
- 140 groundwater) where development risks groundwater contamination or alters groundwater flow
- 141 or downstream hydrology, unless stringent site plan review and appropriate mitigation
- 142 practices have been provided with the goal of maintaining groundwater protection
- 143 12. Unique geologic formations and glacial features (such as rock outcrops, eskers, outwash fans,
- 144 channels, moraine crests, and drumlins)
- 145 13. Riparian slopes between 12%-20% gradient in the driftless portion of the county, unless stringent
- 146 site plan review and appropriate mitigation practices have been provided with the goal of
- 147 maintaining the stability of the slope
- 148 14. Riparian wooded areas, in particular those that are high-quality woodlands

149 **SECTION 5 PERMITTED USES**

150 This section identifies specific features and activities, collectively referred to here as “uses,” that are

151 either prohibited because they are **incompatible** with the functions of Environmental Corridors or

152 permitted because they are considered **compatible** with these functions. The determination of

153 compatibility is made by CARPC staff based on these *Policies and Criteria* and the concepts and

154 principles described in the *Environmental Corridors Report*.

155 **a) Incompatible Uses**

156 The following uses are incompatible with Environmental Corridor functions and prohibited within

157 Environmental Corridors:

- 158 1. Impervious areas or other site development activity, unless otherwise exempted or allowed
- 159 as a compatible use
- 160 2. Soil disturbance within the following areas, often referred to as the “no-grading buffer,”
- 161 unless intended to reestablish natural grades, to restore wetland or riparian habitat, or
- 162 when the grading is necessarily associated with a compatible use and the area is restored
- 163 to existing (or better) conditions utilizing native vegetation:
- 164 a. Within 30 ft of a wetland edge
- 165 b. Within 30 ft of the OHWM of a water body or within the minimum-required
- 166 vegetated buffer, whichever is less
- 167 3. Storage of materials (e.g., contaminated waste products, agricultural chemicals, industrial
- 168 chemicals, petroleum products, etc.), equipment (e.g., diesel generators, fueling stations,
- 169 etc.) or other activities with the potential to contaminate surface water or groundwater

⁸ Based on an assessment by a professional using available DNR coarse-level metric protocols for [oak openings](#), [oak and pine barrens](#), [oak woodlands](#), and [southern sedge meadow and wet-mesic prairie](#) community types

⁹ See Chapter 03 of the [Environmental Corridors Report](#)

170 **b) Compatible Uses**

171 The following uses are generally compatible with Environmental Corridor functions and may be
172 permitted within Environmental Corridors. However, these uses should remain outside of applicable no-
173 grading buffers unless the use results in no changes in grade and only temporary impacts to the
174 Environmental Corridor due to construction, and any temporary disturbance is fully restored to existing
175 (or better) conditions utilizing native vegetation appropriate for the conditions (insofar as allowed by
176 other state and local requirements):

- 177 1. Recreation-related facilities (e.g., park shelters or facilities, bike/pedestrian paths,
178 necessary parking and drives to service allowed facilities, etc.)
- 179 2. Stormwater management practices
- 180 3. Utility maintenance or construction (public or private) that cannot reasonably occur
181 outside of the Environmental Corridor and that meets the criteria of [Wis. Admin. Code § NR](#)
182 [115](#) for the purpose of serving eligible development
- 183 4. Agricultural land uses that adhere to conservation best management practices (also
184 referred to as sustainable or regenerative agriculture) and which build soil health, retain
185 water and nutrients, and provide water quality benefits
- 186 5. Temporary storage of construction materials for staging that do not have the potential to
187 contaminate surface water or groundwater

188 Grading, vegetation modification, or the installation of compatible uses in an Environmental Corridor
189 associated with environmentally sensitive areas should not appreciably reduce or harm the ecological
190 functions of the Environmental Corridor (e.g., disturbed areas shall be restored with native vegetation;
191 facilities should be located so as to minimize the potential impacts on resources present).

192 **SECTION 6 EXEMPTIONS**

193 The following do not necessitate inclusion within Environmental Corridor and are exempt from the
194 *Policies and Criteria*:

- 195 a) Impervious areas (footprint only) that existed prior to February 28, 2008 (date of original
196 adoption of these *Policies and Criteria*)
- 197 b) Constructed riparian steep slopes beyond minimum-required vegetated buffers for water
198 bodies and wetlands
- 199 c) Wetlands (or portions thereof) and associated vegetated buffers that have received an
200 artificial or nonfederal exemption or fill permit from the WDNR
- 201 d) Wetlands (and associated vegetated buffers) which have formed within constructed
202 drainage swales as part of a stormwater management plan or in roadside ditches as part
203 of transportation projects
- 204 e) Transportation maintenance or construction (public or private) that cannot reasonably
205 occur outside the required Environmental Corridor area and that meets the criteria of [Wis.](#)
206 [Admin. Code § NR 117](#) for the purpose of serving eligible development

207 **SECTION 7 CHANGES TO ENVIRONMENTAL CORRIDORS**

208 After specific lands have been designated as Environmental Corridor, subsequent changes are possible
209 through the following two processes: **major changes** and **administrative changes**¹⁰. The determination
210 of which process a change must follow is made by CARPC staff using these guidelines; uncertainty
211 about the water quality impacts of a proposed change will typically trigger the major change process.

212 **a) Major Changes**

213 **Major changes** have the potential for significant adverse impacts to water quality or other protected
214 resources defined by these *Policies and Criteria*. These changes constitute a formal amendment to the
215 *DCWQP*, and require a public hearing, action by the CARPC Commission, and WDNR approval following a
216 detailed analysis of the impact of the change to demonstrate that what is proposed will still maintain
217 water quality standards and contribute to open space functions and that the proposed mitigation
218 measures will likely be successful in mitigating potential adverse impacts. Major change requests must
219 be initiated or supported by the municipality that governs the area in question. Major changes include,
220 but are not limited to, the following:

- 221 1. Removal of, or development within, a required Environmental Corridor area as defined in
222 these *Policies and Criteria*
- 223 2. Any change resulting in the elimination or interruption of the continuity of any corridor
224 segment that includes environmentally sensitive areas
- 225 3. Any change inconsistent with the conditions of a Resolution or Water Quality Management
226 Letter associated with an approved amendment to the sewer service area

227 **b) Administrative Changes**

228 **Administrative changes** do not have the potential for significant adverse impacts to water quality or
229 other protected resources defined by these *Policies and Criteria* and are administered by CARPC staff.
230 Administrative changes include, but are not limited to, the following:

- 231 1. Revisions based on new data (recognized as valid by WDNR) regarding the location, extent,
232 or type of natural feature described as a required Environmental Corridor area
- 233 2. Revisions to reflect municipally approved changes in the location or extent of parks,
234 greenways, conservancy areas, or stormwater management areas
- 235 3. Removal of areas that are not required Environmental Corridors
- 236 4. Addition of areas described in the [Required Areas](#) or [Voluntary Areas](#) sections of these
237 *Policies and Criteria* or determined by CARPC staff to be compatible with the three general
238 criteria for inclusion described in the *Environmental Corridors Report*
- 239 5. Revisions resulting from application of exemptions described in [Section 6](#) (above)

¹⁰ Referred to as 'Minor changes' in original *Policies and Criteria of Environmental Corridors*

Environmental Corridors Policies & Criteria – 2026 Update

Overview of Proposed Changes (last updated: April 1, 2026)

The table below provides a summary of proposed revisions to the Policies and Criteria for Environmental Corridors. Only changes of significance which affect the implementation of Environmental Corridors have been included. Please refer to the draft Environmental Corridor Policies and Criteria (Policies and Criteria, or EC P&C) for precise language ([link here](#)) and consult with CARPC Staff for additional information, as required.

Current Policies and Criteria for Environmental Corridors ([link here](#)) (adopted 2008)

Current Environmental Corridors Report ([link here](#)) (adopted 2025)

Environmental Corridor Delineation

	Description of Change	Intent of Revision	Existing Policy	Proposed Policy
1	<i>Define minimum extent of riparian vegetated buffer based on streamflow duration (e.g., perennial) instead of navigability</i>	Functional value of streams is not directly tied to navigability. Insufficient data describing navigability to apply policy consistently and accurately. Streamflow data is more readily accessible & provides a more consistent determination.	Navigable water bodies receive minimum 75’ buffers; non-navigable water bodies receive minimum 25’ buffers. (A.5. – A.7.)	Perennial water bodies receive minimum 75’ buffers; intermittent water bodies receive minimum 25’ buffers. (Sect 4.a.2. – 4.a.3.)
2	<i>Apply wider vegetated corridors for waters designated as Areas of Special Natural Resource Interest (ASNRI)</i>	Lack of specificity in existing language regarding protection of high-quality water bodies. Align P&C with more recent Fact Sheet which provides for 200’ total width buffer.	(N/A; EC Fact Sheet provides for 200’ total width buffer on all water bodies receiving a 75’ buffer)	Waters designated as ASNRI receive minimum 75’ buffers, with minimum 200’ total width. (Sect 4.a.4.)

Description of Change	Intent of Revision	Existing Policy	Proposed Policy
<p>3 <i>Require inclusion of riparian steep slopes, regardless of vegetation</i></p>	<p>Preservation of riparian steep slopes benefits regional water quality regardless of whether the slopes are wooded. This change aligns with long-standing implementation of policy based on understanding of policy intent.</p>	<p>Wooded steep slopes commencing within 75' of the water body; in practice, all riparian steep slopes are included. (A.4.)</p>	<p>Steep slopes within riparian areas (if commencing within minimum required vegetated buffers and up to 300' from the wetland edge or OHWM & contributing to water body) must be included in EC. (Sect 4.a.7.)</p>
<p>4 <i>Exempt constructed riparian steep slopes</i></p>	<p>Existing policy language does not distinguish between constructed and natural steep slopes.</p>	<p>Wooded steep slopes commencing within 75' of the water body; in practice, all riparian steep slopes are included. (A.4.)</p>	<p>Any constructed steep slopes within riparian areas are not required to be included in EC outside of the minimum required vegetated buffers. (Sect 6.b.)</p>
<p>5 <i>Exempt wetlands in stormwater drainage swales or roadside ditches (and associated buffers)</i></p>	<p>Wetlands can develop within linear drainage swales along roadways and are often eligible to receive DNR permitting; however, if there is no disturbance within the wetland then permitting is not required. In consideration of the function of such wetlands and the operating context of wetland permitting, it is appropriate to relax the wetland setback requirements.</p>	<p><i>All wetlands require a 75' vegetated buffer, unless a DNR permit is provided.</i> (N/A)</p>	<p>Wetlands which have formed within constructed drainage swales as part of a stormwater management plan or in roadside ditches are exempt from inclusion in EC and from provisions of the Policies & Criteria. (Sect 6.d.)</p>

Description of Change	Intent of Revision	Existing Policy	Proposed Policy
<p>6 <i>Prohibit storage of materials or activities with potential to contaminate surface or groundwater within EC</i></p>	<p>Existing policy language does not include explicit provisions to prevent storage of materials or activities within vegetated buffers, despite the potential to contaminate surface water or groundwater.</p>	<p>(N/A)</p>	<p>Storage of materials (e.g., contaminated waste products, agricultural chemicals, industrial chemicals, petroleum products, etc.) or equipment (e.g., diesel generators, fueling stations, etc.) with the potential to contaminate surface water or groundwater is not permitted within EC.</p> <p>(Sect 5.a.3.)</p>
<p>7 <i>Consider of recreational use in determining minimum width of riparian corridor</i></p>	<p>Existing policy language does not reference designated use; specific widths of minimum required vegetated buffers are only described in an associated fact sheet.</p>	<p>(N/A; EC Fact Sheet provides for minimum widths for riparian corridor depending on extent of recreational use & facilities)</p>	<p>Minimum extent of riparian corridor for intermittent streams and drainageways: if intended for public recreational access is 100 ft; if not, 75 ft.</p> <p>(Sect 4.a.3.a – b)</p>
<p>8 <i>Allow temporary impacts to vegetation within the no-grading buffer for defined compatible uses</i></p>	<p>Address gap in current policy where utilities can go through EC within the no-grading buffer, despite no exception being stated for this use. Additionally, temporary impacts when restored to existing or better conditions using native flora pose minimal risk to water quality.</p>	<p>(G.4.)</p>	<p>Temporary impacts to the EC is allowed for compatible uses, provided temporary disturbance is fully restored to existing (or better) conditions utilizing vegetation appropriate for the conditions</p> <p>(Sect 5.b.)</p>

Reorganization & Clarification

	Description of Change	Existing Policy	Proposed Policy
9	<i>Provide background information</i>	Brief explanation with reference to NR 121. (A., D.)	Detailed explanation of the basis, purpose, and implementation of environmental corridors specifically within Dane County. (Sect 1 – 3)
10	<i>Categorize areas eligible for inclusion in Environmental Corridor</i>	No clear distinction between areas that are required to be included and those that are optionally included in practice. (A.)	Areas required for inclusion in corridor and areas recommended for inclusion in corridor are clearly distinguished and enumerated. (Sect 4)
11	<i>Clarify compatible and incompatible uses</i>	Description of which site development activities or land uses are compatible and incompatible with the functions of environmental corridors is vague; policy execution has therefore relied on precedent and interpretation. (F.1., F.5., G.4., H.)	Compatible and incompatible uses are defined and enumerated. (Sect 5)
12	<i>Clarify exemptions</i>	Existing impervious areas are identified as exempt from inclusion in corridor. No clear distinction between compatible uses, incompatible uses, and exemptions. (B., G.1.)	Exempted areas are defined and enumerated. (Sect 6)
13	<i>Clarify role of local government in protection of Environmental Corridor</i>	<i>Outdated information regarding role of local government and CARPC staff.</i> (C., D., E.)	Roles and responsibilities of municipal staff and CARPC staff in the implementation and application of the policies and criteria are explicitly described. (Sect 1, Sect 3, Sect 7)
14	<i>Update nomenclature for changes to Environmental Corridor</i>	Described as Major Changes & Minor Changes. (F., G.)	Described as Major Changes and Administrative Changes. (Sect 7)

**Re: CARPC Resolution 2026-08, CARPC Support for the Economic Development of our Region
(actionable item)**

Requested Action:

Approval of CARPC Resolution 2026-08, CARPC Support for the Economic Development of our Region

Background:

The Commission approved the creation of an Economic Development Program in the 2026 CARPC Work Program with limited commitment of staff time. This was primarily in preparation for discussions about CARPC's role in the region following the dissolution of the Madison Region Economic Partnership (MadREP). The Commission has been discussing since January the prospect of receiving from MadREP a fund intended for the promotion of rural business development across the wider region.

CARPC's Budget and Personnel Panel (BPP) discussed CARPC's role in regional economic development at its February 2 and March 31 meetings. This resolution incorporates several preferences expressed by members of the BPP at those meetings, including limits on the use of one-time economic development funding for CARPC staff costs and the expectation of collaboration with the Greater Madison Chamber of Commerce.

Staff Comments:

This resolution is intended to establish a common understanding, both within the Commission and with our partners across the region, regarding why, how, and where CARPC may be involved in economic development activities.

Attachments:

1. CARPC Resolution 2026-08, CARPC Support for the Economic Development of our Region

Staff Contact:

Jason Valerius
Executive Director
JasonV@CapitalAreaRPC.org
608-474-6010

Next Steps:

None



CARPC Resolution No. 2026-08 CARPC Support for the Economic Development of our Region

WHEREAS, Governor Doyle’s Executive Order #197 creating CARPC notes that “local governments need to work together to meet challenges that transcend municipal boundaries and effectively protect the natural resources and beauty of the capital area, as well as promote economic growth and sound land development practices;” and

WHEREAS, in the preparation of A Greater Madison Vision in 2019 and adoption of the 2050 Regional Development Framework in 2022, the Commission identified three overarching goals for regional development: reduce greenhouse gas emissions and foster community resilience to climate change; increase access to jobs, housing and services for all people; and conserve farmland, water resources, natural areas, and fiscal resources; and

WHEREAS, CARPC established in adoption of the 2050 Regional Development Framework its current vision for “a region where communities create exceptional quality of life for all by working together to solve regional challenges;” and

WHEREAS, Wis. Stat. 66.0309(8)(a)1.d, authorizes all regional planning commissions to “provide advisory services on regional planning problems to the local government units within the region and to other public and private agencies in matters relative to its functions and objectives, and...act as a coordinating agency for programs and activities of local units and agencies as they relate to its objectives;” and

WHEREAS, economic systems, like natural ecosystems and water systems, function across political and jurisdictional boundaries and the health of all such systems within Dane County is intertwined with and dependent upon the health of those systems in the counties and communities around Dane County; and

WHEREAS, CARPC has a long history of collaboration with partner organizations that focus on economic development and business success, where our role has been to provide data, land use planning expertise, and support for the needs of local governments as part of efforts to directly and indirectly promote economic development; and

WHEREAS, CARPC Resolution 2025-05 Guidelines on Providing Services Outside Dane County establishes CARPC’s ability to offer services in the five adjacent counties not affiliated with

another regional planning commission, including Columbia, Dodge, Jefferson, Rock and Sauk, provided those services are not funded by Dane County taxpayers;

NOW, THEREFORE BE IT RESOLVED that the Capital Area Regional Planning Commission reaffirms its commitment to the economic vitality and resilience of our region and seeks to help communities across our region increase access to jobs, housing, and services for all people in our region; and

BE IT FURTHER RESOLVED that our core focus is on quality of life, requiring that any promotion of economic development and business success remain in balance with effective stewardship of our natural systems and resources, especially our lands and our waters; and

BE IT FURTHER RESOLVED that except as otherwise required by law or policy, CARPC will not act to support economic development initiatives or projects through the use of staff time or funding assistance that the Commission determines to be incompatible with sound land development practices due to unmitigated threats to water quality or unsustainable fiscal commitments around the maintenance of inefficient infrastructure; and

BE IT FURTHER RESOLVED that CARPC may operate in support of economic vitality and quality of life in the Counties of Columbia, Dodge, Jefferson, Rock, and Sauk where those operations are requested by a community in those counties and are not funded by Dane County taxpayers; and

BE IT FURTHER RESOLVED that CARPC will not use one-time funding sources specifically related to economic development services either to hire additional CARPC staff or to fund more than 2% of the annual agency payroll; and

BE IT FURTHER RESOLVED that CARPC will continue to partner, coordinate, and communicate with other organizations focused on economic development across the region, including but not limited to the Greater Madison Chamber of Commerce, within the limits described herein; and

BE IT FURTHER RESOLVED that CARPC exists to help communities work together and will not support through funding or staff assistance economic development initiatives that are likely to deteriorate or impede collaborative intergovernmental relationships.

April 9, 2026 _____
Date Adopted

David Pfeiffer, Chairperson

Cynthia Richson, Secretary

**Re: CARPC Resolution 2026-09, Creating an Ad Hoc Rural Economic Development Committee
(actionable item)****Requested Action:**

Approval of CARPC Resolution 2026-09, Creating an Ad Hoc Rural Economic Development Committee

Background:

At the February commission meeting we discussed the acceptance and administration of a USDA revolving loan fund for the benefit of small, rural businesses in the MadREP region, including possible amendment of the CARPC bylaws to create a standing committee that would administer that fund.

As discussed at the March Commission meeting, USDA has determined that their agency can release the federal interest in the fund and allow CARPC a wider range of uses for the fund, including any of the eligible projects described in [7 CFR 4280.17](#) and is currently working with the MadREP Board Chair to document the fund and enable the transfer to CARPC in this way.

CARPC staff have had numerous communications with Greater Madison Chamber of Commerce staff in February and March to discuss this fund specifically and collaboration opportunities more generally. The Chamber remains supportive of CARPC's initiative to rescue this fund and would like to continue collaborating with CARPC.

CARPC's Budget and Personnel Panel (BPP) discussed this fund and CARPC's role in regional economic development at its March 31 meeting. In that discussion BPP members indicated support for retention of the fund for the benefit of the region, support for uses of the fund that encourage planning and incorporate principles such as water quality protection and infill development, and support for CARPC administration of the fund.

Staff Comments:

This resolution is required by USDA to complete the transfer of funds to CARPC. It is modified from the version discussed at the March Commission meeting to incorporate feedback from USDA staff and BPP members. Some of the feedback from the BPP offering guidance on CARPC's administration of the fund was incorporated into CARPC Resolution 2026-08, CARPC Support for the Economic Development of our Region.

Attachments:

1. CARPC Resolution 2026-09, Creating an Ad Hoc Rural Economic Development Committee

Staff Contact:

Jason Valerius
Executive Director
JasonV@CapitalAreaRPC.org
608-474-6010

Next Steps:

- Collaboration with the MadREP Board Chair and USDA staff to complete the transfer of the fund to CARPC (segregated account)
- Outreach to the counties and the Chamber to identify nominees to the committee.
- Appointment to the committee by the CARPC chair



CARPC Resolution No. 2026-09

Creating an Ad Hoc Rural Economic Development Committee

WHEREAS, the Madison Region Economic Partnership (MadREP) has dissolved and transferred most of its regional economic development activities to the Greater Madison Chamber of Commerce, but asked CARPC to accept and utilize a fund that supports business success in rural areas of the counties of Dane, Sauk, Columbia, Dodge, Jefferson, and Rock; and

WHEREAS, the fund originated with Rural Business Development Grant funding from the United States Department of Agriculture (USDA), the fund has to this point been used as a revolving loan fund in support of small and emerging businesses, and USDA staff have indicated that CARPC can establish eligibility to accept and utilize this fund by creating a committee with representation from the multi-county region the fund serves and by committing to continue using the funds for eligible projects in rural areas as defined in [7 CFR part 4280, Subpart E](#); and

WHEREAS, Governor Doyle's Executive Order #197 creating CARPC notes that "local governments need to work together to meet challenges that transcend municipal boundaries and effectively protect the natural resources and beauty of the capital area, as well as promote economic growth and sound land development practices"; and

WHEREAS, Wis. Stat. 66.0309(8)(a)1.d, authorizes all regional planning commissions to "provide advisory services on regional planning problems to the local government units within the region and to other public and private agencies in matters relative to its functions and objectives, and may act as a coordinating agency for programs and activities of local units and agencies as they relate to its objectives;

NOW, THEREFORE BE IT RESOLVED that, under the provision of [CARPC Bylaws](#), Article V, Section 1, the Capital Area Regional Planning Commission hereby establishes, effective April 9, 2026, an Ad Hoc Rural Economic Development Committee; and

BE IT FURTHER RESOLVED that the purposes and functions of the committee are to: a) make recommendations regarding the use of these funds within the project eligibility described in [7 CFR 4280.417](#) and: b) provide continuing oversight and reports to the CARPC Commission regarding use of the funds; and

BE IT FURTHER RESOLVED that the Committee shall be comprised of eight (8) members, including one (1) representing each of the counties of Columbia, Dane, Dodge, Jefferson, Rock and Sauk, nominated by the highest elected official in each county or their designee; one (1) member who is a CARPC Commissioner; and one (1) member who is nominated by the Greater Madison Chamber of Commerce; and

BE IT FURTHER RESOLVED that the committee will select its chairperson by majority vote, a minimum of five (5) members of the committee shall constitute a quorum, and actions of the Committee shall be approved by a majority of the members in attendance; and

BE IT FURTHER RESOLVED that all committee recommendations regarding use of the funds are subject to approval by the CARPC Commission; and

BE IT FURTHER RESOLVED that the CARPC Commission will consider its commitment to protect the quality of surface and ground water resources and may reject any use of the funds that would be incompatible with any applicable state, county or local regulations to protect those water resources; and

BE IT FURTHER RESOLVED that the Committee will provide the Commission with updates regarding its activities after each of its meetings and an annual report in the first quarter of the calendar year on the uses of the Rural Economic Development Fund during the preceding year and the remaining balances of available funds and outstanding loan payments; and

BE IT FURTHER RESOLVED that the committee will remain active as long as there are funds remaining and is anticipated to dissolve by 2031 following repayment or forgiveness of the current outstanding loan, use of the funds for rural economic development purposes, and reporting on those activities to the Commission as described herein; and

BE IT FURTHER RESOLVED that the Commission will accept from MadREP the transfer of the funds and loan described herein for the purposes described herein.

April 9, 2026
Date Adopted

David Pfeiffer, Chairperson

Cynthia Richson, Secretary

**Re: CARPC Resolution 2026-10, Accepting Rural Business Development Fund Transfer from the Madison Region Economic Partnership to the Capital Area Regional Planning Commission
(actionable item)****Requested Action:**

Approval of CARPC Resolution 2026-10, Accepting Rural Business Development Fund Transfer from the Madison Region Economic Partnership to the Capital Area Regional Planning Commission

Background:

At the February commission meeting we discussed the acceptance and administration of a USDA revolving loan fund for the benefit of small, rural businesses in the MadREP region, including possible amendment of the CARPC bylaws to create a standing committee that would administer that fund.

As discussed at the March Commission meeting, USDA has determined that their agency can release the federal interest in the fund and allow CARPC a wider range of uses for the fund, including any of the eligible projects described in [7 CFR 4280.17](#) and is currently working with the MadREP Board Chair to document the fund and enable the transfer to CARPC in this way.

CARPC staff have had numerous communications with Greater Madison Chamber of Commerce staff in February and March to discuss this fund specifically and collaboration opportunities more generally. The Chamber remains supportive of CARPC's initiative to rescue this fund and would like to continue collaborating with CARPC.

CARPC's Budget and Personnel Panel (BPP) discussed this fund and CARPC's role in regional economic development at its March 31 meeting. In that discussion BPP members indicated support for retention of the fund for the benefit of the region, support for uses of the fund that encourage planning and incorporate principles such as water quality protection and infill development, and support for CARPC administration of the fund.

Staff Comments:

This resolution is required by USDA to complete the transfer of funds to CARPC. It is modified from the version discussed at the February Commission meeting to reflect the proposed defederalization of the fund and the broader set of eligible uses.

Attachments:

1. CARPC Resolution 2026-10, Accepting Rural Business Development Fund Transfer from the Madison Region Economic Partnership to the Capital Area Regional Planning Commission

Staff Contact:

Jason Valerius
Executive Director
JasonV@CapitalAreaRPC.org
608-474-6010

Next Steps:

Collaboration with the MadREP Board Chair and USDA staff to complete the transfer of the fund to CARPC (segregated account)



CARPC Resolution No. 2026-10

Accepting Rural Business Development Fund Transfer from the Madison Region Economic Partnership to the Capital Area Regional Planning Commission

WHEREAS, the Madison Region Economic Partnership (MadREP) holds and administers a revolving loan fund that supports the development of small businesses in rural areas of the counties of Dane, Sauk, Columbia, Dodge, Jefferson, and Rock; and

WHEREAS, that revolving loan fund was originally established by the Columbia County Economic Development Corporation with funding from the United States Department of Agriculture (USDA) Rural Business Development Grant Program, and transferred to MadREP in 2021 with \$324,210 in cash, with approval from USDA; and

WHEREAS, the fund is understood to include \$299,439 in cash and \$86,025 in outstanding loan portfolio as of April 1, 2026, and there is no other property acquired with or associated with these funds; and

WHEREAS, MadREP has asked CARPC to take on administration of this fund; and

WHEREAS, CARPC is coordinating this transfer with the advice and assistance of legal counsel; and

WHEREAS, CARPC agrees to utilize these funds for eligible projects in rural areas as defined in [7 CFR part 4280, Subpart E](#).

NOW, THEREFORE, BE IT RESOLVED that the Capital Area Regional Planning Commission approves receiving this fund from the Madison Region Economic Partnership.

April 9, 2026
Date Adopted

David Pfeiffer, Chairperson

Cynthia Richson, Secretary

Re: Framework with the Madison Metropolitan Sewerage District for CARPC to Support Implementation of Badger Mill Creek Resilience Improvement Projects – Staff Presentation and Discussion

Requested Action:

None.

Background:

The Madison Metropolitan Sewerage District (MMSD) pledged \$1 million in 2023 to support the health and resilience of Badger Mill Creek, in conjunction with its decision to discontinue the pumping of treated effluent to the creek.

The Commission voted against a Water Quality Plan amendment allowing that discontinuance of effluent return in 2024 but the DNR approved the amendment with conditions for continued monitoring and efforts to support the health of the creek. MMSD discontinued the flow in 2024.

The City of Verona sued the DNR to reverse its decision, the Circuit Court affirmed the DNR decision, and the City appealed. Briefs were submitted to the Court of Appeals in February 2026 and a decision is anticipated sometime in 2026.

CARPC and MMSD staff anticipate a finding in favor of the DNR, are committed to supporting the health and resiliency of the creek, and believe that CARPC is the best entity to administer the pledged MMSD funding. DNR and Dane County staff are familiar with and supportive of this arrangement, in principal.

The MMSD commission approved the attached resolution on March 26, authorizing staff to continue working toward an agreement between CARPC and MMSD.

Staff Comments:

The attached materials from the March 26 MMSD packet present the background and intent effectively. Commission feedback on this framework and efforts toward an agreement is appreciated.

Attachments:

1. MMSD-CARPC Framework Materials from the March 26, 2026 MMSD Commission Meeting Packet

Staff Contact:

Jason Valerius
Executive Director
JasonV@CapitalAreaRPC.org
608-474-6010

Next Steps:

Continue working with MMSD staff to develop an agreement between CARPC and MMSD for later approval by each commission



COMMISSION AGENDA REPORT

Meeting of March 26, 2026

Authorization to Develop Agreement: Capital Area Regional Planning Committee (CARPC) Partnership Framework for Badger Mill Creek Health and Resiliency

Lead Staff: Eric Dundee, Executive Director

Requested Action: The Commission is requested to adopt Resolution #2026-03-26-R7, authorizing a partnership framework with the Capital Area Regional Planning Commission (CARPC) for management of health and resiliency projects for Badger Mill Creek and authorizing continued work on development of an agreement between CARPC and the District.

Resolution: 2026-03-26-R7

Attachment 1: Badger Mill Creek Stakeholder Group Projects Administration & Implementation Change

Financial Impact:

Action on this item will not have a financial impact. See below for the financial aspects of the Commission's pledge for stakeholder projects.

Summary:

This item is for the Commission to authorize continued work to develop an agreement with the Capital Area Regional Planning Commission (CARPC) to administer pledged funds for Badger Mill Creek health and resiliency. Commission support at this stage will enable the Madison Metropolitan Sewerage District (District) and CARPC staff to further plan for implementation and will inform budget deliberations by the CARPC Commission.

This item does not authorize transfer of funds. District staff will prepare a later Commission action for transfer, when appropriate. The attached resolution prohibits transfer of funds until any and all litigation regarding the District's discontinuation of effluent discharge to Badger Mill Creek has been resolved to the District's satisfaction.

Background:

On May 25, 2023, the Commission authorized District staff to:

“Communicate to the WDNR [Wisconsin Department of Natural Resources], as part of the required Final Compliance Alternatives Plan submittal, that the District's phosphorus compliance approach for its Badger Mill Creek discharge is to discontinue effluent discharge to Badger Mill Creek. (Resolution #2023-05-25-R8).”

This option was the most cost-effective approach to forthcoming stricter phosphorus discharge limits in Badger Mill Creek.

In the same resolution, the Commission pledged \$1.0 million “to improve the health and resiliency of Badger Mill Creek.” To facilitate the effective use of these pledged dollars, the District formed a stakeholder group to develop and recommend projects to improve the creek’s health and resiliency. The Commission authorized a contract with EOR, Inc. to organize and facilitate stakeholder meetings.

The stakeholder group recommended a series of projects, which were presented to the Commission on Dec. 19, 2024. On the advice of District counsel, the Commission took no actions on the projects while litigation regarding the District’s Areawide Water Quality Plan amendment request to discontinue effluent discharge to Badger Mill Creek is underway.

The 2026 Capital Budget authorizes a total project cost of \$2,100,000 for the overall project to address phosphorous requirements in Badger Mill Creek. This is a continuation of authorization from previous capital budgets. The total project cost authorization has covered development of options, pilot testing, environmental studies, stakeholder group facilitation, and other related costs. The total project cost authorization is sufficient to cover the pledged \$1.0 million.¹

The District’s Executive Director and the CARPC Executive Director have held discussions regarding ways to administer the District’s pledged funds. The proposed partnership framework reflects those discussions. No action to transfer funds will be taken until any and all legal challenges to the District’s ability to discontinue effluent discharge to Badger Mill Creek have been resolved to the satisfaction of the District.

Analysis and Options:

CARPC Administration

The District and CARPC have agreed in principle that CARPC is better suited to administer funding for and implementation of the proposed stakeholder group projects or any future projects aimed at the health and resilience of Badger Mill Creek.

The District recognizes it is not the entity best suited to administer the \$1 million allotted for projects proposed in Badger Mill Creek and its surrounding watershed, as the District is not an expert in the types of projects proposed by the Badger Mill Creek Stakeholder Group and was not identified as an owner on any of the projects on the list the group proposed to the Commission in 2024.

As a regional entity with broad expertise that encompasses the types of projects proposed, CARPC is better positioned to administer stakeholder group projects. Not only can it better represent the interests of stakeholders, CARPC also has a greater ability to maximize the return on investment of projects by leveraging grant funding and matching funds.

¹ Project D02, “Badger Mill Creek Phosphorus Compliance” on p. 66 of the 2026 annual budget, available at <https://www.madsewer.org/our-communities/budget-finance/>.

Additionally, the proposed framework removes the District from making project and funding decisions. District staff understand that the District's involvement in choosing projects has been a sticking point for some stakeholder group participants and having CARPC administer the funds and projects removes this perceived bias.

Dane County and the Wisconsin Department of Natural Resources are also supportive of this plan.

Proposed Commission Resolution

Please see the attached resolution for full terms. It is worth noting especially that the resolution:

- Expresses Commission support in principle for CARPC administration of the \$1.0 million.
- Authorizes the Executive Director to continue working with CARPC to develop an agreement.
- Requires that any such agreement be approved by the Commission.
- Prohibits transfer of funds until any and all legal challenges to the District's ability to discontinue effluent discharge to Badger Mill Creek have been resolved to the satisfaction of the District.

Option 1 (Staff Recommendation):

The Commission is requested to adopt Resolution #2026-03-26-R7, authorizing a partnership framework with the Capital Area Regional Planning Commission (CARPC) for management of health and resiliency projects for Badger Mill Creek and authorizing continued work on development of an agreement between CARPC and the District.

Key Considerations:

- CARPC administration of funds would be more effective.
- CARPC may wish to include provisions for administration of the District's pledged funds in the 2027 CARPC budget.
- Commission support may help CARPC in budget development and will allow District and CARPC staff to continue developing an agreement.
- The proposed resolution prohibits use of the pledged \$1.0 million until any and all legal challenges to the District's ability to discontinue effluent discharge to Badger Mill Creek have been resolved to the satisfaction of the District.

Option 2:

Defer consideration of the proposed partnership framework to a future meeting.

Key Considerations:

- The Commission may wish to have further discussion on this matter or adjust the timing of this matter.

Next Steps:

District staff will continue working with CARPC.



**AUTHORIZATION TO DEVELOP AGREEMENT:
CAPITAL AREA REGIONAL PLANNING COMMITTEE (CARPC) PARTNERSHIP FRAMEWORK
FOR BADGER MILL CREEK HEALTH AND RESILIENCY
2026-03-26-R7**

WHEREAS, The Madison Metropolitan Sewerage District (District) Commission pledged \$1.0 million to support health and resiliency of Badger Mill Creek in Resolution #2023-05-25-R8; and,

WHEREAS, To facilitate the effective use of these pledged dollars, the District formed a stakeholder group to develop and recommend projects to improve the creek's health and resiliency; and,

WHEREAS, The stakeholder group recommended a series of projects, which were presented to the Commission on Dec. 19, 2024; and,

WHEREAS, The Commission has taken no actions on the projects while litigation regarding the District's Areawide Water Quality Plan amendment request to discontinue effluent discharge to Badger Mill Creek is under way; and,

WHEREAS, The Commission recognizes that administration of the pledged \$1.0 million for health and resiliency projects would be more appropriately undertaken by the Capital Area Regional Planning Commission (CARPC); and,

WHEREAS, The Commission recognizes that the CARPC commission may wish to include provisions for such administration in the 2027 CARPC budget; and,

WHEREAS, The Commission wishes to provide support in principle for CARPC administration of funds and to identify Commission requirements for such administration.

NOW THEREFORE, BE IT RESOLVED THAT:

1. **Support in principle.** The Madison Metropolitan Sewerage District Commission supports, in principle, the plan for the Capital Area Regional Planning Commission (CARPC) to receive and administer the District Commission's pledged \$1.0 million for Badger Mill Creek health and resiliency projects.
2. **Authorization to develop agreement.** The Commission authorizes the Executive Director to continue working with CARPC staff to develop an agreement that establishes the terms, conditions, obligations, responsibilities, and procedures pursuant to which the District will transfer the Commission's pledged \$1.0 million for Badger Mill Creek health and resiliency projects to CARPC to administer.
3. **Approval of agreement.** The Commission directs that any agreement between the District and CARPC for the transfer of funds from the District to CARPC for health and resiliency projects must be approved by the Commission before it becomes effective.

4. **Use of funds.** The Commission further directs that any agreement between the District and CARPC for the transfer of said funds must provide that CARPC may use said funds solely for Badger Mill Creek health and resiliency projects but may allow CARPC to retain and use for administrative purposes any investment revenues incidental to the temporary holding of said funds.
5. **CARPC role in projects.** The Commission further directs that any agreement between the District and CARPC for the transfer of said funds may provide that CARPC may participate in the implementation of any health and resiliency project and receive funding for CARPC participation.
6. **Timeline.** The Commission further directs that any agreement between the District and CARPC for the transfer of said funds must specify a timeline by which distribution of the District's pledged \$1.0 million must be completed.
7. **Timing of Transfer of Funds.** The Commission further directs that any agreement between the District and CARPC for the transfer of said funds shall provide that such transfer shall not occur until after any and all legal challenges to the District's ability to discontinue effluent discharge to Badger Mill Creek have been resolved to the satisfaction of the District.
8. **Reporting.** The Commission further directs that any agreement between the District and CARPC for the transfer of said funds must obligate CARPC to report, at least annually, to the District, to the Department of Natural Resources, and to interested stakeholders on the state of health and resiliency projects and funding.
9. **Regulatory decisions.** The Commission recognizes that neither the District nor CARPC may exercise authority over regulatory aspects of health and resiliency projects.

The above resolution was adopted by the Commissioners of the Madison Metropolitan Sewerage District meeting held on March 26, 2026.

MADISON METROPOLITAN SEWERAGE DISTRICT

Attested by:

Thomas Hovel, President

Bradley Murphy, Secretary

Badger Mill Creek Stakeholder Group Projects Administration & Implementation Change

Madison Metropolitan Sewerage District is committed to continuing to support the health and resiliency of Badger Mill Creek, but recognizes it is not the best entity to administer and implement the projects proposed by the Badger Mill Creek Stakeholder Group. As such, the District and CARPC have agreed, in principle, that CARPC is better suited to administer and implement the stakeholder group projects. Dane County and the Wisconsin Department of Natural Resources are also supportive of this plan.

As a next step, the District and CARPC will seek authorization from their respective Commissions to develop and formalize an agreement pursuant to which the District would transfer to CARPC certain funds for Badger Mill Creek health and resiliency projects, and CARPC would administer the use of those funds for project implementation.

Why CARPC administration of project funding

The District recognizes it is not the best-suited entity to administrate the \$1 million allotted for health and resiliency projects in Badger Mill Creek and its surrounding watershed. The District is not an expert in watersheds, groundwater, stormwater or aquatic habitats; these areas represent the projects proposed by the Badger Mill Creek Stakeholder Group.

As a regional entity with broad expertise, CARPC is better positioned to administer stakeholder group projects. Not only can it better represent stakeholders' interests, but CARPC also has a greater ability to maximize the return on investment of projects by leveraging grant funding and matching funds.

Finally, enabling CARPC to administer project funding removes the District from making project and funding decisions. We understand the District's involvement in project selection has been a sticking point for some stakeholder group participants and having CARPC administer the funds and projects removes this perceived bias.

What remains the same

While our leadership changed in 2025, our commitment to support the health and resiliency of Badger Mill Creek following the discontinuance of effluent has not. Our \$1 million pledge remains in place. We will continue to rely on experts for vetting and implementing projects developed by the stakeholder group, which makes CARPC a much better fit to administer the projects and funds.

Additionally, we remain firm in our stance that no District funds will be transferred to CARPC or released for projects while the District's areawide water quality plan amendment remains in litigation.

Next steps

District leadership will seek authorization from the District Commission at its March 26, 2026 meeting to allow District and CARPC staff to develop an agreement establishing CARPC as the administration partner for the pledged funds. The CARPC Commission will discuss the arrangement at its April 9, 2026 meeting. District and CARPC staff will incorporate feedback from each commission and bring forward an agreement for action by each Commission later this year.

Once the agreement is executed, CARPC will determine the best way to involve stakeholders and administer the funds. If litigation is resolved in a timely manner, funds may be available for use in 2027.

Re: Chair and Executive Director Reports**Requested Action:**

None

Background:

None

Staff Comments:

This is an opportunity for the Commission Chair to provide updates on items not otherwise addressed in the agenda of this meeting, including any noteworthy activities or discussions of the Executive Committee or other active committees.

The Executive Director provides a monthly report briefly describing the various activities of the agency and will present noteworthy highlights from that report.

Attachments:

1. Executive Director's Report

Staff Contact:

Jason Valerius
Executive Director
jasonv@capitalarearpc.org
608-474-6010

Next Steps:

N/A



Executive Director Monthly Report to CARPC Commissioners

Thursday, April 9, 2026

(updates from the previous month in blue text)

Highlighted text indicates items Jason plans to talk about during the meeting.

AGENCY STAFFING

- After a brief time away from CARPC Senior Environmental Engineer Nick Bower has returned to lead the Water Quality Program.

PROGRAMS AND SERVICES

Regional Development Framework ([link to website](#))

- **Performance indicators** – Work on the KPIs will continue throughout 2026, leading up to and informing the RDF update in 2027.
- **Regional Population Projections** – CARPC collaborated with Dane County, City of Madison, the MPO, and UW faculty to prepare [population projections](#) that reflect Dane County’s unique growth factors. Staff are now working with the MPO to allocate population, housing units, and jobs based on these projections to Transportation Analysis Zones (TAZs). These allocations support transportation modelling, updating the 2055 Regional Transportation Plan (RTP), maintaining the Transportation Improvement Program (TIP), and estimates for sewer service planning.
- **Urban Green Infrastructure Guide** – Staff will be working on a document in 2026 for local municipalities that highlights green infrastructure practices for the urban context and the challenges to implementing those practices. It will combine staff and UW gstudent expertise in ecological design practices, urban design, and stormwater management.
- **East Metro/Door Creek Corridor Planning** — Ongoing collaboration with the UW Department of Planning and Landscape Architecture continues. Seniors in the professional Bachelor of Landscape Architecture (BLA) and second year students in the Master of Urban and Regional Planning (MSURPL) programs will work to identify Framework implementation opportunities in the eastern portion of the metro area, east of I-90/94, from Sun Prairie to McFarland.
- **Farmland Stewardship** – Following presentation to the Commission at the February meeting, Jason Valerius presented on recent trends in farmland conversion and urban development at the 2/25 Yahara Pride Farms Watershed-Wide Conference. Staff will continue working on updated data and maps, an inventory of current Dane County ag preservation and sustainability efforts, and recommended actions CARPC can take to further farmland stewardship over the next few months.

Planning Assistance

- **In Progress:**
 - [Rock County Comprehensive and Farmland Preservation Plan updates](#) (Apr 2025 – June 2026)
 - City of Evansville human-powered transportation planning (Mar 2025 – April 2026)
 - Town of Berry 2025/2026 comprehensive planning (Sep 2025 – Dec 2026)
- **Ongoing:** Towns of Berry, Blue Mounds, Bristol, Springfield, and Sun Prairie zoning mapping services
- **Potential:** City of Sun Prairie Housing Data Dashboard – contracting in progress.

Intergovernmental Agreement Efforts

- **Town and City of Sun Prairie** – The parties are pursuing this as a Cooperative Plan under 66.0307. [The City/Town workgroup will be introducing the draft plan to board/commission members beginning in mid-April with public review meetings occurring in May or June](#)
- **Village of Oregon and City of Fitchburg** – Jason presented a summary of the findings to a joint meeting of the Village Board and City Council at the Oregon Public Library on February 25 [and has prepared a summary report about the process with suggested next steps. The Village and City have requested the continuing involvement of CARPC on a fee-for-service basis to participate in and help facilitate discussions for an intergovernmental agreement.](#)

Education and Information

- View regular updates on CARPC's [Facebook/LinkedIn](#), [newsletters](#), and our [website](#).

Regional Water Quality Planning

- **WI Salt Wise Partnership**
 - [Salt Wise Summit at the Capitol](#)
 - Early planning stages for an advocacy day at the Capitol in late July
 - Informational session open to legislators, legislative aides, and the general public
 - Supporting Salt Wise partners and allies to meet with legislators before and after the info session
 - Fall Event Planning
 - Meeting with partners to discuss fall training needs
 - Checking back in with 2025 fall training participants on how the season went
 - Webinars (<https://www.wisaltwise.com/Wednesday-Webinars>)
 - July 8 – Salt Wise Stories: Village of Walworth
 - August 5 – 100% Liquids Sidewalk Deicing: Lessons Learned from the Past 10 Years
 - September 2 – Battle of the Blades
 - March Presentations
 - 3/4/2026 - Insight FS Winter Meeting (Johnson Creek)
 - 3/13/2026 - Wingra Nature Camp
 - 3/19/2026 - Beloit HS AP Environmental Science
 - [Media Coverage](#)
 - NPR Short Wave Podcast Episode showcases WI Salt Wise

- Episode: The world’s freshwater is getting saltier. Why? (<https://www.npr.org/2026/03/25/nx-s1-5709052/water-lake-filter-science-salt-sodium>)

NET Gain podcast: Win/Win/Win Deicing: Save Money, Save Damage, Save the Environment (<https://netgain.podbean.com/e/winwinwin-deicing-save-money-save-damage-save-the-environment-with-aron-rodman-of-extra-mile-snow-and-allison-madison-from-wisconsin-salt-wise/>)

- Wisconsin Salt Wise Strategic Plan
 - April 1 - Strategic Plan Roll Out Meeting
 - June – Initial meeting of the Salt Wise Advisory Board

Water Quality Plan Updates & Amendments

- **SSA Amendments**
 - Active: V-Waunakee (“Heyday Development”) – [DNR Approval received March 16th](#).
 - Pre-Application: C-Sun Prairie (Business Park); V-Cross Plains (“PI/Haen Development”)
 - Pending/future: T-Westport (“Tuggle Rd/Hope Ct”); V-McFarland; C-Madison (multiple); C-Sun Prairie (multiple); C-Middleton (“Balzer Road”); V-Belleville (north and east areas); V-Windsor (“North Towne Rd/Gray Rd”); V-Oregon (Oak Hill Correctional Institute, Jenkins/Connors Lands); T-Vienna (Madison Street); T-Pleasant Springs (Lake Kegonsa LSA – “Yahara Dr” and “Skyline Dr”)
- **Amendment for MMSD Effluent Discharge (2308 “Nine Springs WWTP Effluent Revision”)** – Amendment to the Dane County Areawide Water Quality Management Plan, which allowed MMSD to cease its discharge to Badger Mill Creek
 - DNR conditionally approved the amendment (link to [DNR decision letter](#)); MMSD has satisfied conditions of approval
 - Verona continuing to litigate the decision; filed brief in Court of Appeals in December 2025; [DNR provided response brief in February 2026](#)
 - CARPC and MMSD staff are drafting the outline of an agreement for each commission to discuss in Q2 or Q3 2026 whereby CARPC will manage projects that promote the resilience of Badger Mill Creek using funds provided by MMSD
- **Environmental Corridors Report** – Updated Environmental Corridors Report has been approved and adopted as part of DCWQP (link to [Final Report](#)). Staff will revisit to verify conformity with newer updates to Policies & Criteria for Environmental Corridors (pending adoption; anticipated 2026 work).
- **Environmental Corridors Policies & Criteria** – Staff prepared proposed updates to the Policies and Criteria for Env Corridors (adopted in 2008, part of the Dane County Water Quality Plan), including consultation with subject matter experts in fall 2025 and focus groups (local municipalities and gov’t and non-gov’t stakeholders) in February 2026. [The draft was released to known stakeholders on April 2 and published to the general public in the April Commission packet on April 34. A public hearing is proposed for May.](#)
- **DCWQP Summary Plan Update** – Updating the [Summary Plan](#) (last updated 2004) to update information and figures, refine focus and applicability per the current regulatory environment and needs/conditions in the region, and incorporate current themes (e.g., climate resilience, equity, and environmental justice) into the DCWQP. CARPC was awarded a DNR grant using IJIA funds (Infrastructure Investment and Jobs Act) (\$48,000 over 2 years) to partially fund this work. [Progress will accelerate in Q2, with completion of final draft report by end of 2026.](#)

- **SSA Amendment Process Analysis (Ad-Hoc Water Quality Committee)** – Proposed changes to the policies and criteria for how we administer and review proposed SSA Amendments. [Commission action to recommend approval in Mar '26, final DNR decision anticipated in Apr '26.](#)
- **Water Quality Plan Consistency**
 - [9 sewer extension reviews completed in March \(5 greenfield development, 0 infill development, 1 redevelopment, 3 reconstruction/other\)](#)
 - [Staff are assessing costs and revenue from sewer extension reviews and anticipate bringing forward proposed updates to review fees in the next few months](#)

Regional Climate Resilience Planning

- **Black Earth Creek Green Infrastructure Plan (GI Plan)** – Continuing work with the Steering Committee on implementation of the GI Plan ([link to site](#)). Anticipate staying active through 5-year period referenced in Plan (2022-2027).
 - Provided letter of support to BECWA for the pursuit of grant funding for educational materials; if awarded, CARPC would host information and data tools on the existing GI Plan webpage. [Grant was not funded.](#)
- **Tree Canopy Collaborative (TCC)/Dane County Tree Board (DCTB)** - Liz Levy is the Chair of the TCC ([link to website](#)), which meets every other month. [The DCTB \(chaired by Matt Noone\) has established a working group to develop Model Tree Conservation Ordinances. CARPC will be participating at two upcoming earth day/arbor day events, the Bilingual Conservation Fair and the Party for the Planet.](#)
- **Neighborhood Forest Project** – Partnership with Eco-Latinos, Operation Fresh Start, Sustain Dane, and Urban Tree Alliance to involve residents in planting and maintaining 100-125 trees per year in south Madison. This project is funded through the Inflation Reduction Act (IRA) (3-year project for \$360,000). CARPC’s contribution includes time for coordination, database development, and mapping assistance. CARPC will receive \$2,500 a year for our assistance for a period of three years.
- **Midwest Climate Collaborative** – Caitlin Shanahan is on the MCC Steering Committee through 2028. [Nick Bower presented CARPC’s work on Regional Water Quality Planning \(in collaboration with WDNR\) at the 2026 Midwest Climate Summit in Cleveland, OH.](#)
- **Stream Crossing Inventory** – Using the Great Lakes Stream Crossing Inventory protocol ([link to dashboard](#)), CARPC and Trout Unlimited staff are conducting a road-stream crossing inventory at town, county, and some state roads in Dane County ([link to project website](#)). This project is funded by the Infrastructure Investment and Jobs Act, WEM Pre-Disaster Flood Resilience Grant, and FEMA Building Resilient Infrastructure and Communities program. Staff are working on summary reports for towns where data collection is complete. [9 reports were sent out late March/early April.](#) Field work will resume in the spring. [Job opening for Environmental Resources Technician posted on March 31.](#)
- **Old Growth Forests and Oak Savannah Mapping** – CARPC is collaborating with the Wisconsin State Cartographer’s Office, with funding support from the John C. Bock Foundation, to create a statewide old growth forest and prairie remnant mapping tool that serves land stewardship and conservation efforts.
- **Dane County Rural Free Tree Program** – A collaborative pilot project between the Dane County Planning Department, Dane County Land and Water Resources, CARPC and the Dane County Tree Board to offer free heritage oak progeny trees to the owners of all parcels newly rezoned to Rural Single-Family Residential. Participant feedback has been very positive.

- **School Tree Nursery Program** – CARPC is partnering with UW-Stevens Point LEAF (Learning, Experiences, & Adventures in Forestry) educators, with funding support from a CD Besadny Conservation Grant, to build a Dane County School Tree Nursery Program and develop K-12 curriculum that incorporates tree nurseries and environmental education. On 1/15/2026 CARPC was awarded \$5,000 dollars from the Wisconsin Arborists Association to support additional materials and operational funding for school tree nurseries.
- **GIS Workshops for K-12** – CARPC, the State Cartographer’s Office, Sustain Dane and Maydm will be applying for grant funding to host three, three-day workshops supporting youth that are either underserved, female, or of color. CARPC has organized GIS workshops for youth during the summers of 2024 and 2025; this is the first time CARPC will be partnering with Maydm. Together these organizations submitted an application to United Way of Dane County’s By Youth For Youth on 12/19/2025 for \$3,000. An application to the Alliant Energy Community Grant program was submitted on 1/15/2026 for \$10,000. Awards will be announced on April 4th.
- **Media Coverage**
 - **Our Wisconsin, April/May Publication: *From Little Things Big Things Grow***

Cooperative Water Resources Monitoring

- **Dane County Water Resources Monitoring Program** - Ongoing with USGS and partners. Existing agreements expired at the end of 2025. Staff are continuing to coordinate with USGS and local partners to renew their agreements as there is uncertainty with long-term funding avenues due to partner limitations. A one-year agreement for 2026 has been reached, with agreements between CARPC and local partners, and between CARPC and USGS forthcoming. Further discussions regarding future years ongoing.
- **Black Earth Creek Watershed Monitoring Program** – Ongoing with USGS and partners, with CARPC acting as facilitator and funding coordinator (contract runs 2024-2028). Awarded DNR Surface Water Grant for nearly \$18,000 for 2026. Previously awarded \$18,270 DNR Surface Water Grant for FY25 and \$21,900 awarded in FY24 to support monitoring. Anticipating a small shortfall in funding for monitoring activities in 2026, and larger shortfall in 2027 and 2028, possibly resulting in changes to scope and reduction in data collection (USGS leading subgroup to review).
- **Regional Strategic Monitoring Framework** – Development of a strategic framework to guide stream monitoring activities across Dane County; project in close collaboration with Dane County LWR staff, and currently on pause awaiting further direction from County staff.
- **Starkweather Creek Community-Based Water Chloride Monitoring Initiative** – Collaborative project to continuously monitor chloride point sources throughout the Starkweather watershed at 8 different locations ([link to website](#)). A 15-member Starkweather Technical Committee meets on a bi-monthly schedule (most recent meeting: 12/18). Four conductivity meters have been adopted by partner organizations. One DNR Surface Water Grant, for \$10,000, was awarded for FY26. An additional \$25,000 was awarded in 2026 from the DNR (IIJA funds) to support equipment purchases, staff funding and continued monitoring efforts. Orders for new monitoring equipment are underway. The Starkweather Creek Technical Committee’s proposal for the Starkweather Creek watershed as a Nelson Institute’s Water Resources Management (WRM) Practicum topic for 2026-2028 was accepted. A kickoff meeting will be held in April with UW for project planning.

PARTNERSHIP UPDATES

- **MPO** – The MPO is updating their Regional Transportation Plan, to be completed by May 2027. CARPC will be assisting with aspects of that process, including demographic projections and public meetings.
- **Dane County Office of Energy and Climate Change** – Liz Levy completed a draft of a countywide rooftop solar installation map ([link to map](#)). Additional community data to expand the database is welcome, please send to lizl@capitalarearpc.org.
- **Dane County Planning & Development** – next quarterly meeting of CARPC and DCPD staff on May 7. DPD and CARPC staff are assisting Emergency Management with updating the Dane County Natural Hazards Mitigation Plan (fall 2025 – EOY 2026). County has begun the 2025 Land Use Inventory and will assign CARPC townships to update.
- **Dane County Human Services, Housing Access & Affordability Division** – Jason [assisted](#) the County’s Farmworker Housing Study by helping to facilitate discussions about zoning and development regulation strategies – these discussions [occurred](#) in February and March 2026.
- **Dane County Advisory Committee on Data Centers** – Caitlin and Commissioner Richson are serving on an ad hoc committee created by the Dane County Board for the purpose of impartial fact-finding, researching, analyzing, and providing recommendations on the impacts of data center development in Dane County. Meetings to occur monthly. [Link to 1/28 Leader Independent article](#).
- **Madison Region Economic Partnership (MadREP)** – MadREP transferred most of its economic development functions to the Greater Madison Chamber of Commerce, as described in [this December 12, 2025 joint announcement](#). [MadREP wind down of administrative functions and asset distribution continues](#), including efforts to transfer a USDA-funded Revolving Loan Fund to CARPC.
- **Greater Madison Chamber of Commerce (GMCC)** – We anticipate participation in discussions with GMCC in the coming months about coordination of regional economic development activities. Jason has a monthly coordination meeting set up with GMCC staff leadership.
- **MMSD** – Jason meets with Executive Director Eric Dundee regularly to discuss shared CARPC/MMSD interests and initiatives. We are planning a joint event in fall 2026 co-sponsored by CARPC, MMSD and Dane County Land and Water Resources Dept. focused on regional topics related to wastewater collection and treatment.
- **Clean Lakes Alliance** – Continuing to pursue collaboration opportunities in support of the *Renew the Blue* plan ([link to site](#)), with a focus on data and green infrastructure. Jason is co-chairing a new Renew the Blue Council in 2025 and 2026 to prioritize and drive the implementation of actions related to phosphorous reduction, and CARPC is collaborating with Dane County Land and Water Resources and other participants to help develop land use data and indicators related to water quality. [The Council was formally kicked off at an event on February 4; the second meeting was March 11, the next working meeting is August 12. Jason has been asked to present at the annual State of the Lakes event on May 13 regarding population and land conversion trends.](#)
- **Madison Area Builders Association** – We met in January with a focus group of developers, attorneys and engineers assembled by MABA to explain the proposed updates to the sewer service area amendment process and hear comments about that process and other aspects of the Dane County Water Quality Plan regulations for development. [We met again in February to explain the proposed updates to the Environmental Corridors Policies and Criteria.](#)

- **Groundswell Conservancy** – CARPC donated 75 tree protection tubes to Groundswell (from a supply donated to us by Regius Rubber of Waterloo) to help protect plantings on several Groundswell restoration projects.
- **The Nature Conservancy** – CARPC met with TNC Conservation Science Director Peter Levi. TNC will assist CARPC with outreach of the old growth mapping project and has capacity to assist CARPC with a model forest preservation ordinance development that could be shared with Dane County communities.
- **Driftless Area Land Conservancy** – DALC staff participated in a “partners” focus group in February 2026 regarding our update of the Environmental Corridors Policies and Criteria. They contacted CARPC in April to invite discussion about how CARPC might be able to assist or contribute to their 2028-2032 strategic planning process.
- **Maydm** – [Maydm](#) provides girls and youth of color in grades 6 -12 with the skills, experiences, and connections to pursue careers in and change the face of STEM (Science, Technology, Engineering, Math). [CARPC has signed a memorandum of understanding with Maydm to host a summer 2026 intern, with intern pay provided by Maydm. Melissa Michaud will be coordinating the intern.](#)

OPEN RECORDS REQUESTS

- We received an anonymous request in March for information about staff and compensation. We responded to the request with a copy of our salary schedule and have not heard anything further.