



September 10, 2019

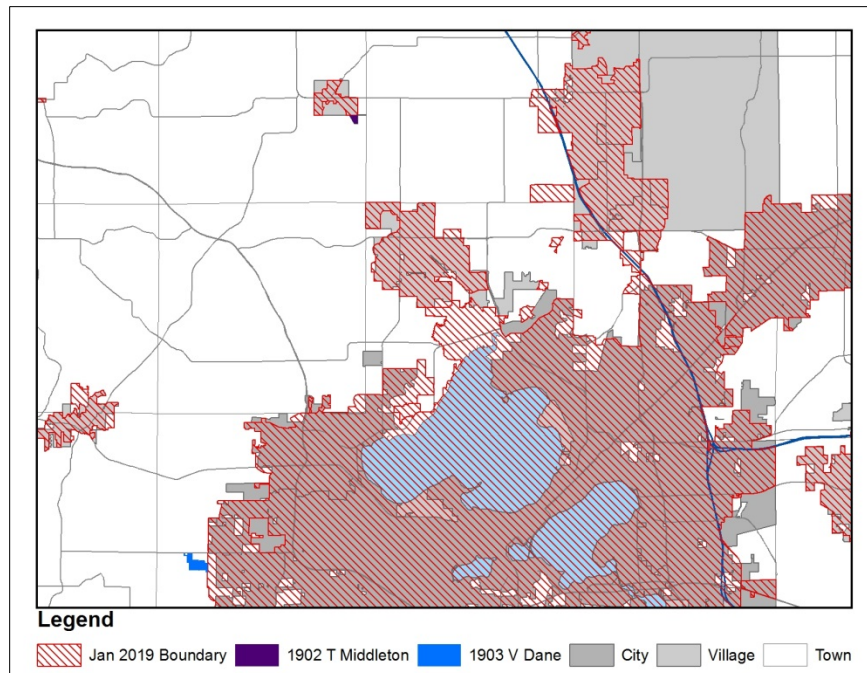
NOTICE OF PUBLIC HEARING October 10, 2019

Amendment to the Dane County Land Use and Transportation Plan

PLEASE TAKE NOTICE that the Capital Area Regional Planning Commission will hold a public hearing convening at 7:00 p.m. on October 10, 2019, in the **“Prairie View Room” in the Fitchburg Community Center, 5510 Lacy Road, Fitchburg, Wisconsin**, for the purpose of public input on amendments to the *Dane County Land Use and Transportation Plan* revising Urban Service Area and Environmental Corridor boundaries within the following areas:

- Central Urban Service Area and Environmental Corridors in the Town of Middleton
- Dane Urban Service Area and Environmental Corridors in the Village of Dane

These boundary adjustments add 90.8 net developable acres to Urban Service Areas.



For information or questions, contact Sean Higgins at SeanH@CapitalAreaRPC.org or 608-283-1267.

E-mailed to:

Roger Schmidt, Village President, Village of Dane
Teresa Hughey Groves, Clerk Treasurer, Village of Dane
David Koenig, Town Chairperson, Town of Dane
Angie Volkman, Clerk, Town of Dane
Dave Ripp, District 29, Dane County Board of Supervisors
Cynthia Richson, Town Chairperson, Town of Middleton
Greg DiMiceli, Administrator/Treasurer, Town of Middleton
Brian Grady, Planner, City of Madison
Heather Stouder, Director, City of Madison Planning Division
Steven Peters, District 15, Dane County Board of Supervisors
City, Village and Town Clerks
Joe Parisi, Dane County Executive
Satya Rhodes-Conway, Mayor, City of Madison
Jerry Derr, President, Dane County Towns Association
Robert Wipperfurth, President, Dane County Cities and Villages Association
Scott McDonell, Dane County Clerk
Sharon Corrigan, Chair, Dane County Board of Supervisors
Jerry Bollig, Chair, Dane County Zoning and Land Regulation Committee
Michele Ritt, Chair, Dane County Environment, Agriculture & Natural Resources Committee
Patrick Miles, Chair, Dane County Personnel and Finance Committee
Pam Porter, Chair, Dane County Lakes and Watershed Commission
Lyle Updike, Vice Chair, Dane County Lakes and Watershed Commission
Matt Diebel, Watershed Management Coordinator, Dane County Land and Water Resources Dept.
Laura Hicklin, Director, Dane County Land and Water Resources Dept.
Mark Opitz, Chair, Madison Area Transportation Planning Board
Bill Schaefer, Manager, Madison Area Transportation Planning Board
Todd Violante, Dane County Department of Planning and Development
Michael Mucha, Director and Chief Engineer, MMSD
Charles Hicklin, Dane County Controller
Robert Phillips, City Engineer, City of Madison
Tom Heikkinen, General Manager, Madison Water Utility
James Kuehn, WisDOT
Diane Paoni, WisDOT
Bruce Rheineck, WDNR
Greg Searle, WDNR Fitchburg Service Center
Lisa Helmuth, WDNR Central Office
Tim Asplund, WDNR Central Office
Curt Sauser, Sewer Connections and Extensions, MMSD